

DELHI TRANSCO LTD.

STATE LOAD DISPATCH CENTER

PROGRESS REPORT

JULY 2016

S. No.	CONTENTS	Page No.
1.	Salient Features of Delhi Power System	3
2.	Performance of Generating Stations within Delhi	4
3.	Details of Outage of Generating Stations within Delhi	5-13
4.	Allocation of Power to Delhi from unallocated quota of central sector	14
5.	Allocation of Power to Discoms	15
6.	Power Availability Demand Position of Delhi at the time of occurrence of Peak Demand	16
7.	Power Availability Demand Position of Delhi at the time of occurrence of Maximum Un-Restricted Demand	17
8.	Source wise scheduled drawl from grid and Availability within Delhi	18-21
9.	Shedding Details	22-26
10.	Load Curve for the Day of Peak Demand	27
11.	Load Curve for the day of occurrence of Maximum Un-Restricted Demand	28
12.	Load Curve for the day of Maximum Energy Consumed	29
13.	Load Curve for the day of Maximum Un-Restricted Energy Demand	30
14.	Load Duration Curve	31
15.	Frequency Analysis	32
16.	Voltage Profile for significant 220kV Sub-Stations	33
17.	Voltage Profile for significant 400kV Sub-Stations	34-35
18.	Details of Capacitors Installations in Delhi	36-41
19.	Tripping Details of 400/220 KV System in Delhi Power System	42-45
20.	Details of Under frequency Relay operations in Delhi Power System	46

Sr. No.	Features	JUL. 2015	JUL 2016
1	Effective Generation Capacity within Delhi in MW		
	Rajghat Power House	135	135
	Gas Turbine	270	270
	Pragati Power Corporation Ltd.	330	330
	Badapur Thermal Power Station	705	705
	Rithala GT	108	108
	Bawana	1372	1372
	TOWMCL	16	16
	Total	2936	2936
2	Maximum Unrestricted Demand (MW)	5743	6342
	Date	03.07.15	01.07.16
	Time	15.39.10	15.10.35
3	Peak Demand met (MW)	5743	6261
	Date	03.07.15	01.07.16
	Time	15.39.10	15.10.35
4	Peak Availability (MW)	5605	6080
5	Shortage (-) / Surplus (+) in MW	(-) 138	(-) 181
6	Percentage Shortage (-) / Surplus (+)	(-) 3.06	(-) 2.89
7	Maximum Energy Consume in a day (Mus)	113.322	126.447
8	Energy Consumed during the month	3115.526	3306.948
9	Load Shedding in Mus		
A)	Due to Grid Restrictions		
i)	Under Frequency Relay Operations	0.001	0.000
ii)	Manual Load shedding from DTL S/Stns.	0.000	0.000
iii)	Load Shedding due to low frequency / Low Voltage / TTC/ATC Violation		
	NDPL	0.193	0.035
	BRPL	0.307	0.407
	BYPL	0.000	0.023
	NDMC	0.008	0.000
	MES	0.000	0.000
iv)	Due to transmission Constraints in Central Sector	0.000	0.000
	Total due to Grid Restriction	0.509	0.465
B)	Due to Constraints in System in Mus		
	DTL	0.986	0.445
	NDPL	0.160	0.086
	BRPL	1.091	1.486
	BYPL	0.470	0.268
	NDMC	0.000	0.000
	MES	0.000	0.000
	Other Agencies	0.129	0.019
	Total	2.836	2.304
11	Grand Total in Mus	3.345	2.769

2. PERFORMANCE OF GENERATING STATIONS WITHIN DELHI DURING JULY 2016

A) For the month of July 2016

All Figures in MUs

S. No	Stations	Gross Generation	Aux. Consumption	Net Generation	Availability (%)	Backing Down
1.	RPH	0.000	0.590	-0.590	0.000	-0.744
2.	GT	73.137	2.548	70.589	79.85	84.800
3.	PPCL	180.521	4.553	175.968	92.42	44.887
4.	BTPS	262.056	26.531	235.525	56.04	35.440
5.	Rithala	0.000	0.062	-0.062	89.17	61.008
6.	Bawana	146.21	5.975	140.246	71.59	572.991
7.	Towmcl	13.105	1.978	11.127	--	--
	TOTAL	675.029	42.237	632.803	--	798.382

B) For the Year 2016-17 (Upto July 2016)

Power Station	Effective Capacity (MW)	Net Generation in MUs for Jul 2016	Availability (%) for Jul 2016	PLF (%) for Jul 2016	Cumulative Generation in MUs upto Jul 2016 for the year 2016-17	Cumulative Availability in % upto Jul 2016 for the year 2016-17	Cumulative PLF in % upto Jul 2016 for the year 2016-17
RPH	135	-0.590	0.00	-0.83	0.000	0.00	-0.98
GT	270	70.589	79.85	36.33	249.163	79.84	31.29
PPCL	330	175.968	92.42	73.57	723.443	91.26	74.93
BTPS	705	235.525	56.04	49.49	876.85	54.36	46.58
Rithala	108	-0.062	89.17	0.00	0.000	89.17	0.00
Bawana	1372	140.246	71.59	14.45	537.586	68.35	13.25
Towmcl	16	11.127	--	110.09	54.274	--	--
TOTAL	2936	632.803	--	--	2441.316	--	--

3 DETAILS OF OUTAGES OF GENERATING STNS. WITHIN DELHI W.E.F. APRIL 2016

RPH

Unit No	Capacity in MW	Outage		Synchronization		Reason of Outage
		Date	Time	Date	Time	
1	67.5	08.05.15	13.40	--	--	Tripped on boiler tube leakage

Unit No	Capacity in MW	Outage		Synchronization		Reason of Outage
		Date	Time	Date	Time	
2	67.5	21.05.15	10.20	--	--	Stopped due to shortage of coal

(B) Gas Turbine

Unit No	Capacity in MW	Outage		Synchronization		Reason of Outage
		Date	Time	Date	Time	
1	30	30.03.16	13:52	17.04.16	10:45	Machine tripped as heavy jerk observed in Control room and 160 MVA Tr-i& II tripped at 220 KV end due to tripping of Geeta Colony to Wazirabad ckt. Machine not taken on load due to less demand from SLDC.
		17.04.16	10:45	17.04.16	18:45	Station shut down to attend ACW line.
		17.04.16	18:45	29.04.16	19:15	Stopped due to low demand and high frequency
		13.5.16	16:10	13.5.16	17:47	Machine stopped to replace the broken drain valve in the inlet line of ACW.
		15.5.16	08:40	15.5.16	11:00	machine stopped to attend the leakage of oil from LV bushing of Unit Transformer. Machine cleared by Electrical division at 11:00 hrs but machine not taken on load due to low schedule from SLDC.
		15.5.16	11:00	16.5.16	10:54	Machine stopped as per SLDC message
		23.5.16	15:46	25.5.16	15:30	Machine tripped due to tripping of 160 MVA Tr-I& II. After that machine not taken on load due to less demand
		28.5.16	12:01	6.6.16	09:58	Stopped due to low demand and high frequency
		10.6.16	16:54	10.6.16	17:08	machine came on FSNL as both the ICT 160 MVA TX-I & II tripped due to jek in the system.
		13.6.16	07:11	13.6.16	09:00	Machine tripped as heavy jerk observed in the system as both 160 MVA Tx-I & II tripped.
		4.7.16	08:50	4.7.16	08:50	Stopped due to low demand and high frequency
		15.7.16	18:18	15.7.16	18:18	
		15.7.16	10:58	15.7.16	10:58	
20.7.16	14:45	20.7.16	14:45			

Unit No	Capacity in MW	Outage		Synchronization		Reason of Outage
		Date	Time	Date	Time	
2	30	28.01.16	01:20	31.03.16	23:59	Stopped due to low demand and high frequency
		01.04.16	18:00	17.04.16	10:45	
		17.04.16	10:45	17.04.16	18:45	Station shut down to attend ACW line.
		17.04.16	18:45	5.5.16	15:11	Stopped due to low demand and high frequency
		5.5.16	15:57	5.5.16	16:40	Machine stopped due to problem in ACW line.
		7.5.16	17:02	7.5.16	17:52	Problem in battery charger
		19.5.16	00:02	19.5.16	01:03	T-Communication link inoperative
		23.5.16	15:46	23.5.16	15:50	Machine came on FSNL due to tripping of 160 MVA Tr-I& II.
		25.5.16	06:09	25.5.16	06:52	T-Communication link inoperative
		26.5.16	18:15	26.5.16	23:20	Machine tripped on high exhaust trip alarm.
		29.5.16	00:50	06.06.16	08.56	Stopped due to low demand and high frequency
		10.6.16	16:54	10.6.16	17:00	machine came on FSNL as both the ICT 160 MVA Tx-I & II tripped due to jek in the system.
		13.6.16	07:11	13.6.16	13:40	Machine tripped as heavy jerk observed in the system as both 160 MVA Tx-I & II tripped.
		1.7.16	09:18	1.7.16	09:18	Loss of Field alarm appeared and machine tripped on Electrical Trouble Normal Shutdown.
		2.7.16	15:45	2.7.16	15:45	Stopped due to low demand and high frequency
		6.7.16	23:10	6.7.16	23:10	Loss of Field alarm appeared and machine tripped on Electrical Trouble Normal Shutdown.
		6.7.16	16:26	6.7.16	16:26	Stopped due to low demand and high frequency
		7.7.16	20:09	7.7.16	20:09	Loss of Field alarm appeared and machine tripped on Electrical Trouble Normal Shutdown.
		9.7.16	16:40	9.7.16	16:40	machine desynchroniz to check the Mvar problem.
		9.7.16	22:45	9.7.16	22:45	Loss of Field alarm appeared and machine tripped on Electrical Trouble Normal Shutdown.
		9.7.16	15:55	9.7.16	15:55	
15.7.16	13:20	15.7.16	13:20			
21.7.16	13:02	21.7.16	13:02	Stopped due to low demand and high frequency		

Unit No	Capacity in MW	Outage		Synchronization		Reason of Outage
		Date	Time	Date	Time	
3	30	01.02.16	19:15	17.04.16	10:45	Stopped due to low demand and high frequency
		17.04.16	10:45	17.04.16	18:45	Station shut down to attend ACW line.
		17.04.16	18:45	12.05.16	12:00	Stopped due to low demand and high frequency
		12.5.16	12:00	19.5.16	23:09	Machine under shut down as permit taken by Electrical division to replace its 66 KV breaker.
		19.5.16	23:09	20.5.16	20:52	Machine available but not taken on load due to less schedule from SLDC
		20.5.16	23:58	06.06.16	15:40	
		6.6.16	18:06	9.6.16	15:50	Stopped due to low demand and high frequency
		9.6.16	18:46	30.6.16	14:30	
		30.6.16	14:40	30.6.16	16:20	Machine tripped due 'S' communication link inoperative.
		30.6.16	17:19	30.6.16	18:05	machine tripped on false alarm in Turbine or Accessories Area.
		01.07.16	23:59	01.07.16	23:59	Stopped due to low demand and high frequency

Unit No	Capacity in MW	Outage		Synchronization		Reason of Outage
		Date	Time	Date	Time	
4	30	29.01.16	14:00	17.04.16	10:45	Stopped due to low demand and high frequency
		17.04.16	10:45	17.04.16	18:45	Station shut down to attend ACW line.
		17.04.16	18:45	16.05.16	15:04	Stopped due to low demand and high frequency
		16.5.16	18:04	18.5.16	16:12	Machine stopped due to low schedule from SLDC
		21.5.16	16:05	21.5.16	17:57	supply of Computer failed.
		23.5.16	15:46	24.5.16	15:25	Machine tripped due to tripping of 160 MVA Tr-I& II. After that machine not taken on load due to less demand
		24.5.16	16:27	06.06.16	11:12	Stopped due to low demand and high frequency
		6.6.16	20:10	7.6.16	10:34	
		10.6.16	16:54	10.6.16	17:08	
		10.6.16	18:32	13.6.16	12:55	Stopped due to low demand and high frequency
		13.6.16	22:38	20.6.16	08:33	
		20.6.16	16:30	24.6.16	12:14	
		24.6.16	17:45	30.6.16	10:07	Machine tripped on over temperature alarm
		30.6.16	19:00	30.6.16	19:55	
		2.7.16	10:51	2.7.16	10:51	Stopped due to low demand and high frequency
		8.7.16	11:45	8.7.16	11:45	
		14.7.16	23:59	14.7.16	23:59	

Unit No	Capacity in MW	Outage		Synchronization		Reason of Outage
		Date	Time	Date	Time	
5	30	14.03.16	19:15	01.04.16	15:05	Stopped due to low demand and high frequency
		11.04.16	19:06	11.04.16	21:22	
		17.04.16	10:45	17.04.16	18:38	Station shut down to attend ACW line.
		18.04.16	12:54	24.04.16	10:55	Stopped due to low demand and high frequency
		29.04.16	19:15	13.05.16	17:10	
		13.5.16	19:30	16.5.16	13:29	
		20.5.16	23:42	21.5.16	18:08	machine stopped to attend leakage of oil from IGV
		21.5.16	18:55	21.5.16	20:04	Machine tripped on high exhaust temperature
		22.5.16	11:46	23.5.16	11:30	Stopped due to low demand and high frequency
		23.5.16	11:55	23.5.16	12:30	machine desynchronise to check the position of Bleed valve.
		23.5.16	15:46	24.5.16	15:42	Machine tripped due to tripping of 160 MVA Tr-I& II. After that machine not taken on load due to less demand
		25.5.16	16:35	26.5.16	19:05	Stopped due to low demand and high frequency
		27.5.16	00:07	27.5.16	17:20	
		27.5.16	17:25	28.5.16	11:07	
		29.5.16	22:10	29.5.16	22:22	Machine came on FSNL due to tripping of 160 MVA Tr-I& II.
		10.6.16	16:54	10.6.16	17:08	machine came on FSNL as both the ICT 160 MVA TX-I & II tripped due to jek in the system.
		11.6.16	20:45	13.6.16	11:12	Stopped due to low demand and high frequency
		20.6.16	01:04	23.6.16	15:59	Machine stopped to inspect the low load reason on machine by M/s BGGTS
		23.6.16	16:00	24.6.16	16:18	Stopped due to low demand and high frequency
		24.6.16	18:05	25.6.16	10:10	
		2.7.16	16:52	2.7.16	16:52	
		7.7.16	08:38	7.7.16	08:38	
		12.7.16	09:06	12.7.16	09:06	
15.7.16	21:40	15.7.16	21:40			
23.7.16	05:03	23.7.16	05:03			
28.7.16	23:59	28.7.16	23:59			

Unit No	Capacity in MW	Outage		Synchronization		Reason of Outage
		Date	Time	Date	Time	
6	30	19.03.16	11:40	6.04.16	12:00	Stopped due to low demand and high frequency
		06.04.16	12:00	11.04.16	18:10	machine taken under S/d for Combustion Inspection & Boroscopic Inspection
		11.04.16	21:06	17.04.16	10:45	Stopped due to low demand and high frequency
		17.04.16	10:45	17.04.16	18:45	Station shut down to attend ACW line.
		17.04.16	18:45	18.04.16	11:30	Stopped due to low demand and high frequency
		24.04.16	11:44	13.05.16	18:45	
		13.5.16	20:15	16.5.16	17:23	
		23.5.16	15:46	23.5.16	16:37	Machine tripped due to tripping of 160 MVA Tr-I& II.
		29.5.16	01:50	02.06.16	10:48	Machine stopped due to low schedule from SLDC
		10.6.16	16:54	10.6.16	17:08	machine came on FSNL as both the ICT 160 MVA TX-I & II tripped due to jek in the system.
		11.6.16	20:45	13.6.16	20:34	Stopped due to low demand and high frequency
		20.6.16	16:35	24.6.16	13:20	
		24.6.16	18:08	25.6.16	10:04	
		6.7.16	11:05	6.7.16	11:05	
		12.7.16	15:05	12.7.16	15:05	Machine tripped on Electrical trouble normal shut down. SF-6 second stage gas pressure low alarm appeared on protection pannel
		27.7.16	09:11	27.7.16	09:11	
		27.7.16	23:59	27.7.16	23:59	
					Stopped due to low demand and high frequency	

Unit No	Capacity in MW	Outage		Synchronization		Reason of Outage
		Date	Time	Date	Time	
STG -1	30	29.1.16	14:00	01.04.16	18:05	M/c cleared from maintainence side but Stopped due to low demand and high frequency
		17.04.16	10:45	17.04.16	18:45	Station shut down to attend ACW line.
		17.04.16	18:45	29.04.16	19:15	Stopped due to low demand and high frequency
		01.5.16	21:27	01.5.16	22:59	Machine tripped due to failure of LT supply.
		13.5.16	16:10	13.5.16	18:48	Machine stopped due to problem in ACW line.
		23.5.16	15:46	23.5.16	17:25	Machine tripped due to tripping of 160 MVA Tr-I& II.
		23.5.16	19:20	24.5.16	14:04	Stopped due to low demand and high frequency
		29.5.16	00:50	06.06.16	11:44	
		10.6.16	16:54	10.6.16	17:53	machine tripped as both the ICT 160 MVA TX-I & II tripped due to jek in the system.
		13.6.16	07:11	13.6.16	10:45	Machine tripped as heavy jerk observed in the system as both 160 MVA Tx-I & II tripped.
		4.7.16	12:20	4.7.16	12:20	Stopped due to low demand and high frequency
		15.7.16	13:29	15.7.16	13:29	
		31.7.16	16:05	31.7.16	16:05	
					Due to jerk CEP-1A tripped & machine tripped on low vacuum.	

Unit No	Capacity in MW	Outage		Synchronization		Reason of Outage
		Date	Time	Date	Time	
STG -2	30	29.01.16	14:00	17.04.16	10:45	M/c cleared from maintenance side Stopped due to low demand and high frequency
		17.04.16	10:45	17.04.16	18:45	Station shut down to attend ACW line.
		17.04.16	18:45	19.05.16	07:45	Stopped due to low demand and high frequency
		21.5.16	16:04	21.5.16	19:15	Machine tripped due to tripping of GT#4
		23.5.16	15:46	23.5.16	17:25	Machine tripped due to tripping of 160 MVA Tr-I& II.
		23.5.16	17:25	06.06.16	17:04	Stopped due to low demand and high frequency
		6.6.16	17:19	6.6.16	19:38	machine tripped on Hot well very high alarm as the parameter of STG# 2 got freezed and actual value of the same was not appearing on BCD.
		6.6.16	20:10	7.6.16	12:55	Stopped due to low demand and high frequency
		10.6.16	16:54	13.6.16	18:06	machine tripped as both the ICT 160 MVA TX-I & II tripped due to jek in the system. Machine not taken on load due low demand.
		13.6.16	22:38	20.6.16	11:40	Stopped due to low demand and high frequency
		20.6.16	16:35	24.6.16	14:54	
		24.6.16	17:47	30.6.16	13:45	
		30.6.16	19:00	30.6.16	22:03	Machine tripped due to tripping of GT#4
		02.07.16	23:59	02.07.16	23:59	Stopped due to low demand and high frequency

Unit No	Capacity in MW	Outage		Synchronization		Reason of Outage
		Date	Time	Date	Time	
STG -3	30	19.03.16	18:15	01.04.16	17:45	Stopped due to low demand and high frequency
		01.04.16	18:30	01.04.16	19:26	Tripped on Gen. Class-A relay
		01.04.16	19:32	01.04.16	20:07	Tripped on Gen. Class-A relay
		11.04.16	21:06	11.04.16	21:45	Machine stopped due to stopping of GT#6.
		17.04.16	10:45	17.04.16	19:57	Station shut down to attend ACW line.
		29.04.16	19:15	09.05.16	15:52	Stopped due to low demand and high frequency
		16.5.16	16:02	16.5.16	16:30	Machine stopped to attend false over speed alarm
		21.5.16	21:28	21.5.16	23:52	Machine tripped on Turbine FJB shaft vibration very high
		23.5.16	15:46	23.5.16	17:30	Machine tripped due to tripping of 160 MVA Tr-I& II.
		29.5.16	22:10	29.5.16	23:45	Machine tripped due to tripping of 160 MVA Tr-I& II.
		31.5.16	20:16	31.5.16	23:45	SNH feeder tripped & found earth fault.
		2.6.16	11:36	2.6.16	14:00	Machine tripped while changing the load control mode from auxiliary to pressure.
		10.6.16	16:54	10.6.16	17:38	machine tripped as both the ICT 160 MVA TX-I & II tripped due to jek in the system.
		11.6.16	20:45	13.6.16	13:26	Stopped due to low demand and high frequency
		13.6.16	21:30	13.6.16	22:30	Machine tripped on Class A relay.
		19.6.16	07:01	19.6.16	08:02	Machine tripped on FJB shaft vibration very high.
		20.6.16	16:35	24.6.16	15:16	Stopped due to low demand and high frequency
		24.6.16	18:12	25.6.16	11:55	
		7.7.16	11:18	7.7.16	11:18	
		12.7.16	12:30	12.7.16	12:30	
		18.7.16	06:45	18.7.16	06:45	Machine tripped on FJB shaft Vibration very high.
		27.7.16	09:11	27.7.16	09:11	Machine tripped due to tripping of GT-6 as running on single HRS#6.
		28.7.16	23:59	28.7.16	23:59	Stopped due to low demand and high frequency

(C) PRAGATI

Unit No	Capacity in MW	Outage		Synchronization		Reason of Outage
		Date	Time	Date	Time	
1	104	01.04.16	00.00	06.04.16	06.00	Stopped due to low demand and high frequency
		01.05.16	05.58	01.05.16	13.15	Unit stopped by stn.
		07.05.16	11.37	07.05.16	12.34	Unit tripped.
		23.05.16	22.16	24.05.16	10.01	Unit stopped and started due to low demand and high frequency
		09.06.16	14:33	09.06.16	15:10	GT#1 tripped on grid disturbance.
		18.06.16	07:09	18.06.16	09:13	GT#1 tripped on grid disturbance.
		18.06.16	10:09	18.06.16	10:38	GT#1 tripped.
		11.07.16	08.10	11.07.16	09.32	Unit tripped due to grid disturbance
		16.07.16	08.50	19.07.16	11.00	Stopped due to low demand and high frequency
		19.07.16	11.00	19.07.16	14.01	Unit not available
		30.07.16	00.00	31.07.16	14.10	Stopped due to low demand and high frequency

Unit No	Capacity in MW	Outage		Synchronization		Reason of Outage
		Date	Time	Date	Time	
2	104	01.04.16	00.00	01.04.16	03.18	Stopped due to low demand and high frequency
		06.04.16	08.40	11.04.16	04.31	G.T.-2 was swpped by G.T. -1 and started as desired
		15.04.16	06.06	15.04.16	12.02	Unit stopped
		24.04.16	14.15	25.04.16	06.48	Stopped due to low demand and high frequency
		28.04.16	12.44	28.04.16	13.35	Unit tripped
		06.05.16	11.28	06.05.16	16.00	Unit tripped due to grid disturbance
		06.05.16	16.00	11.05.16	13.27	Unit tripped
		26.05.16	21.18	26.05.16	22.55	Unit tripped
		05.06.16	03:59	08.06.16	15:17	GT2 tripped
		10.06.16	16:50	10.06.16	17:38	GT#2 tripped on grid disturbance.
		13.06.16	19:49	13.06.16	20:54	GT#2 tripped on grid disturbance.
		18.06.16	07:09	18.06.16	09:54	GT#2 tripped on grid disturbance.
		19.06.26	05:58	20.06.16	06:00	Stopped due to low demand and high frequency
		13.07.16	16.29	15.07.16	19.18	Unit tripped
		31.07.16	07.22	31.07.16	23.59	Stopped due to low demand and high frequency

Unit No	Capacity in MW	Outage		Synchronization		Reason of Outage
		Date	Time	Date	Time	
STG	122	01.04.16	00.00	01.04.16	09.07	Stopped due to low demand and high frequency
		21.04.16	14.59	21.04.16	16.25	STG Tripped
		24.04.16	13.15	24.04.16	21.27	Unit stopped
		29.04.16	11.58	29.04.16	12.46	STG Tripped
		02.05.16	15.57	02.05.16	16.54	STG Tripped
		06.05.16	11.28	06.05.16	12.12	Unit tripped due to grid disturbance
		07.05.16	11.40	07.05.16	13.30	Unit tripped alongwith G.T.-1
		08.05.16	17.49	08.05.16	19.35	STG Tripped
		10.05.16	17.55	10.05.16	23.58	STG Tripped
		13.05.16	19.02	13.05.16	20.50	Stopped due to low demand and high frequency
		05.06.16	14:20	05.06.16	15:06	STG tripped on grid disturbance.
		09.06.16	14:33	09.06.16	16:22	STG tripped on grid disturbance.
		10.06.16	16:50	10.06.16	18:00	STG tripped on grid disturbance.
		13.06.16	12:14	13.06.16	17:46	Stopped due to low demand and high frequency
		13.06.16	19:49	13.06.16	21:34	STG tripped on grid disturbance.
		18.06.16	07:09	18.06.16	10:05	STG tripped on grid disturbance.
		18.06.16	10:09	18.06.16	10:57	STG tripped on GT#1 tripped
		27.06.16	19:06	28.06.16	03:36	Stopped due to low demand and high frequency
		09.07.16	12.53	09.07.16	15.19	Unit tripped
		11.07.16	08.05	11.07.16	10.52	Unit tripped due to grid disturbance
18.07.16	18.37	18.07.16	19.44	Unit tripped		
30.07.16	09.17	30.07.16	18.23	Stopped due to low demand and high frequency		
31.07.16	07.22	31.07.16	16.17			

(D) BADARPUR THERMAL POWER STATION

Unit	Capacity in MW	Outage		Synchronization		Reason of Outage
		Date	Time	Date	Time	
1	95	01.04.15	00.00	31.07.16	23.59	Stopped due to low demand and high frequency

Unit	Capacity in MW	Outage		Synchronization		Reason of Outage
		Date	Time	Date	Time	
2	95	24.09.15	19.52	31.07.16	23.59	Stopped due to low demand and high frequency

Unit	Capacity in MW	Outage		Synchronization		Reason of Outage
		Date	Time	Date	Time	
3	95	09.10.15	01.00	31.07.16	23.59	Stopped due to low demand and high frequency

Unit	Capacity in MW	Outage		Synchronization		Reason of Outage
		Date	Time	Date	Time	
4	210	12.12.15	14.30	04.04.16	07.47	Stopped due to low demand and high frequency
		11.04.16	14.03	12.04.16	20.11	Economizer tube leakage
		24.04.16	1621	24.04.16	21.52	PA Fan A lub oil sys temp high
		01.05.16	16.30	01.05.16	17.55	Human Error(Vacuum low)
		10.05.16	05.34	11.05.16	01.39	Boiler Drum Impulse line lkg
		11.05.16	09.08	21.05.16	03.10	Gen Seal problem
		21.05.16	04.04	21.05.16	04.38	ID Fan A Thermal Overload
		21.05.16	15.10	21.05.16	16.45	Relay malfunction (air flow low)
		03.06.16	21.30	05.06.16	07.03	Water Platen Lkg
		09.06.16	14.27	09.06.16	18.22	Grid Disturbance

Unit	Capacity in MW	Outage		Synchronization		Reason of Outage
		Date	Time	Date	Time	
5	210	24.04.16	16.21	24.04.16	21.52	Stopped due to temp. high.
		06.06.16	09.50	07.06.16	13.53	Water leakage
		09.06.16	14.28	09.06.16	17.11	Tripped due to grid disturbance
		17.07.16	14.30	17.07.16	18.15	Oil surge relay cable inter core shorting.

(E) BAWANA CCGT POWER STATION

Unit	Capacity in MW	Outage		Synchronization		Reason of Outage
		Date	Time	Date	Time	
1	216	16.07.15	02.18	31.07.16	23.59	Machine tripped due to compressor stalling alarm

Unit	Capacity in MW	Outage		Synchronization		Reason of Outage
		Date	Time	Date	Time	
2	216	24.03.16	00.00	03.05.16	06.00	Stopped due to low demand and high frequency
		03.05.16	06.00	03.05.16	09.30	Machine shutdown for planned mtc.
		03.05.16	09.30	13.06.16	15.00	Stopped due to low demand and high frequency
		13.06.16	15.00	16.06.16	17.15	Machine shut down for planned maintenance due to annual testing of generator transformer .
		16.06.16	17.15	26.06.16	09.24	Stopped due to low demand and high frequency

Unit	Capacity in MW	Outage		Synchronization		Reason of Outage
		Date	Time	Date	Time	
STG-1	254	28.03.16	00.00	15.04.16	10.00	Planned Shut down.
		15.04.16	10.00	03.05.16	06.00	Stopped due to low demand and high frequency
		03.05.16	06.00	03.05.16	09.30	Machine shutdown for planned mtc.
		03.05.16	09.30	13.06.16	15.00	Stopped due to low demand and high frequency
		13.06.16	15.00	16.06.16	17.15	Machine shut down for planned maintenance due to annual testing of generator transformer .
		16.06.16	17.15	26.06.16	15.20	Stopped due to low demand and high frequency

Unit	Capacity in MW	Outage		Synchronization		Reason of Outage
		Date	Time	Date	Time	
3	216	08.01.16	23.15	18.04.16	05.23	Stopped due to low demand and high frequency
		18.04.16	11.16	18.04.16	19.12	Unit tripped
		03.05.16	06.08	03.05.16	08.57	Machine shutdown for planned mtc.
		23.05.16	19.04	30.06.16	23.59	Stopped due to low demand and high frequency

Unit	Capacity in MW	Outage		Synchronization		Reason of Outage
		Date	Time	Date	Time	
4	216	08.01.16	23.15	03.05.16	06.00	Stopped due to low demand and high frequency
		03.05.16	06.00	03.05.16	09.30	Machine shutdown for planned mtc.
		03.05.16	09.30	27.05.16	01.12	Stopped due to low demand and high frequency
		30.05.16	11.16	30.06.16	23.59	

Unit	Capacity in MW	Outage		Synchronization		Reason of Outage
		Date	Time	Date	Time	
STG-2	254	28.03.16	00.00	30.04.16	23.59	Planned shutdown
		03.05.16	06.00	03.05.16	09.30	Machine shutdown for planned mtc.
		03.05.16	06.10	03.05.16	10.39	Machine shutdown for planned mtc.
		06.05.16	16.45	06.05.16	17.44	Unit tripped
		23.05.16	19.06	27.05.16	08.24	Stopped due to low demand and high frequency
		27.05.16	11.18	30.06.16	23.59	Stopped due to low demand and high frequency

(F) RITHALA POWER STATION

Unit	Capacity in MW	Outage		Synchronization		Reason of Outage
		Date	Time	Date	Time	
1	31.8	19.03.13	17:32	31.07.16	23.59	Stopped due to low demand and high frequency

Unit	Capacity in MW	Outage		Synchronization		Reason of Outage
		Date	Time	Date	Time	
2	31.8	07.06.13	22:41	31.07.16	23.59	Stopped due to low demand and high frequency

Unit	Capacity in MW	Outage		Synchronization		Reason of Outage
		Date	Time	Date	Time	
STG	31.8	07.06.13	22:38	31.07.16	23.59	Stopped due to low demand and high frequency

ALLOCATION OF POWER TO DELHI

A)

Time block 00.00hrs. to 24.00hrs. @ 0% allocation from Unallocated Quota from 01.04.2016

Name of the Stn	Installed capacity	Total Un-allocated	Basic Allocation	Basic Allocation at periphery	Allocation out of Unallocated Quota	Allocation out of Un-allocation Quota at Delhi periphery	Total allocation at Delhi periphery
1	2	3	4	5	6	7	(8)=(5)+(7)
<u>NTPC STATIONS</u>							
Singrauli STPS	2000	300	150	130	0	0	130
Rihand-I	1000	150	100	87	0	0	87
Rihand Stage -II	1000	150	126	109	0	0	109
Rihand Stage -III	1000	150	132	115	0	0	115
ANTA GPS	419	63	44	41	0	0	41
Auriya GPS	663.36	99	72	67	0	0	67
Dadri GPS	829.78	129	91	85	0	0	85
Dadri NCTPS (Th)	840	0	756	657	0	0	657
Dadri NCTPS (Th) Stage-II	980	147	735	639	0	0	639
Unchahaar-I TPS	420	20	24	21	0	0	21
Unchahaar-II TPS	420	63	47	41	0	0	41
Unchahaar-III TPS	210	31	29	25	0	0	25
Koldam HEP	800	120	56	53	0	0	53
TOTAL	10582	1422	2362	2069	0	0	2069
<u>NHPC</u>							
Baira Suil HPS	180	0	20	19	0	0	19
Salal HPS	690	0	80	76	0	0	76
Tanakpur HEP	94	0	12	11	0	0	11
Chamera HEP	540	0	43	41	0	0	41
Chamera-II HEP	300	54	40	38	0	0	38
Chamera-III HEP	231	35	29	28	0	0	28
URI-I HEP	480	0	53	50	0	0	50
URI-II HEP	240	0	32	31	0	0	31
Sewa HEP	120	18	16	15	0	0	15
Dhauri Ganga HEP	280	42	37	35	0	0	35
Dulhasti HEP	390	58	50	48	0	0	48
Parbati-III HEP	520	66	66	63	0	0	63
TOTAL	4065	272	479	455	0	0	455
<u>NPC</u>							
Narora APS	440	64	47	41	0	0	41
RAPP (C)	440	64	56	49	0	0	49
TOTAL	880	128	103	89	0	0	89
<u>SVJNL</u>							
Nathpa Jhakri HEP	1500	149	142	135	0	0	135
<u>THDC</u>							
Tehri Hydro	1000	99	63	60	0	0	60
Koteshwar HEP	400	40	39	37	0	0	37
TOTAL	1400	139	102	97	0	0	97
Total	18427	2110	3188	2846	0	0	2846
<u>Allocation from ER and Tala HEP</u>							
Farakka	1600	0	22	19	0	0	19
Kahalgaon	840	0	51	43	0	0	43
Talchar	1000	0	0	0	0	0	0
Tala HEP	1020	153	30	25	0	0	25
Kahalgaon-II	1500	0	157	131	0	0	131
Total ER	5960	153	261	217	0	0	217
<u>Joint Venture</u>							
Jhajjar TPS	1500	114	643	577	0	0	577
Ultra Mega Projects							
Sasan	3960	0	446	383	0	0	383
Grand Total	29847	2377	4536	4023	0	0	4023

5 ALLOCATION OF POWER TO DISCOMS

A) ALLOCATION OF POWER TO VARIOUS LICENCEES AS PER ORDER OF DERC AND DECISION OF GNCTD FOR ALLOCATION OF CENTRAL SECTOR STATIONS (DADRI THERMAL & BTPS) AND STATE SECTOR GENERATING STATIONS w.e.f. 06.08.2013.

(Allocation In %)

(A) 10.00hrs. to 17.00hrs.

SOURCES	LICENSEES					
	NDMC	MES	NDPL	BRPL	BYPL	TOTAL
1. Central Sector without Dadri (Th)	0	0	29.18	43.58	27.24	100.00
2. Dadri (Th)	16.63	0	24.22	36.86	22.39	100.00
3. BTPS	17.73	7.09	21.81	33.2	20.17	100.00
4. RPH	0	0	29.025	44.133	26.842	100.00
5. GT	0	0	29.02	44.16	26.82	100.00
6. Pragati	30.3	0	20.22	30.78	18.7	100.00
7. DVC	0	0	29.18	43.58	27.24	100.00
8. BAWANA CCGT*	7.30	1.82	20.688	30.888	19.304	80.00

(B) 00.00hrs. to 10.00hrs. and 17.00hrs. to 24.00hrs.

SOURCES	LICENSEES					
	NDMC	MES	NDPL	BRPL	BYPL	TOTAL
1. Central Sector without Dadri (Th)	0	0	29.18	43.58	27.24	100.00
2. Dadri (Th)	16.53	0	24.22	36.86	22.39	100.00
3. BTPS	17.73	7.09	21.81	33.2	20.17	100.00
4. RPH	0	0	29.025	44.133	26.842	100.00
5. GT	0	0	29.02	44.16	26.82	100.00
6. Pragati	30.3	0	20.22	30.78	18.7	100.00
7. DVC	0	0	29.18	43.58	27.24	100.00
8. BAWANA CCGT*	7.30	1.82	20.688	30.888	19.304	80.00

* 20% POWER OF BAWANA CCGT ALLOCATED TO HARYANA (10%) & PUNJAB (10%)

6 POWER AVAILABILITY-DEMAND POSITION AT THE TIME OF PEAK DEMAND MET DURING JULY 2016

All figures in MW

Date	Time of peak demand	Generation within Delhi								Import from the Grid	Schedule from the Grid	OD(-)/UD(+)	Demand met	Shedding	Un-Restricted Demand
		RPH	GT	PPCL	Rithala	Bawana	Towmel	BTPS	Total						
(1)	(2)	(3)	(4)	(5)	(6)	(7)	(8)	(9)= (3) to (8)	(10)	(11)	(12)= (11) - (10)	(13)= (11)+ (12)	(14)	(15)= (13)+ (14)	
1	15.10.35	0	163	292	0	304	16	356	1131	5130	4949	181	6261	81	6342
2	00.00.03	0	157	292	0	254	16	328	1047	4351	4482	-131	5398	0	5398
3	22.38.27	0	66	264	0	-5	18	323	666	3978	4047	-69	4644	40	4684
4	23.04.54	0	73	264	0	-5	16	321	669	4493	4453	40	5162	0	5162
5	23.00.11	0	73	282	0	-5	16	352	718	4955	4899	56	5673	2	5675
6	15.40.34	0	98	302	0	252	16	312	980	4728	4777	-49	5708	0	5708
7	22.55.41	0	63	264	0	253	13	324	917	4800	4678	122	5717	10	5727
8	00.01.08	0	63	265	0	251	15	316	910	4602	4655	-53	5512	3	5515
9	15.35.12	0	103	205	0	253	16	314	891	4480	4459	21	5371	0	5371
10	23.12.03	0	107	261	0	254	18	322	962	4273	4186	87	5235	0	5235
11	23.05.56	0	108	262	0	257	16	325	968	4427	4455	-28	5395	3	5398
12	00.00.31	0	108	264	0	252	16	326	966	4274	4155	119	5240	0	5240
13	15.12.21	0	74	262	0	253	16	322	927	4461	4304	157	5388	0	5388
14	15.15.08	0	160	143	0	254	11	332	900	4592	4548	44	5492	0	5492
15	15.23.14	0	108	146	0	253	15	318	840	4414	4536	-122	5254	4	5258
16	00.00.12	0	85	262	0	253	14	316	930	3991	3873	118	4921	9	4930
17	00.00.48	0	72	152	0	-5	13	321	553	3591	3992	-401	4144	0	4144
18	14.52.14	0	71	149	0	-5	8	312	535	4062	3965	97	4597	0	4597
19	22.56.05	0	69	260	0	-4	11	330	666	4665	4648	17	5331	0	5331
20	22.57.00	0	100	261	0	-4	12	330	699	4892	4911	-19	5591	2	5593
21	15.29.47	0	113	261	0	301	14	345	1034	4853	4639	214	5887	0	5887
22	15.29.49	0	126	296	0	253	15	330	1020	4884	4886	-2	5904	89	5993
23	00.00.06	0	129	262	0	262	16	327	996	4621	4745	-124	5617	0	5617
24	15.30.00	0	103	261	0	255	14	325	958	4328	4459	-131	5286	0	5286
25	22.56.30	0	102	262	0	254	16	344	978	4633	4613	20	5611	0	5611
26	00.00.01	0	102	263	0	254	16	332	967	4384	4423	-39	5351	0	5351
27	11.06.41	0	92	263	0	254	16	320	945	3896	3576	320	4841	0	4841
28	15.05.00	0	109	264	0	254	16	320	963	3929	3997	-68	4892	2	4894
29	15.10.39	0	74	262	0	249	6	320	911	3717	3747	-30	4628	0	4628
30	11.57.19	0	74	101	0	252	16	320	763	3483	3280	203	4246	0	4246
31	15.30.00	0	74	150	0	253	16	320	813	3369	3314	55	4182	0	4182

POWER AVAILABILITY- DEMAND POSITION AT THE TIME OF MAXIMUM UNRESTRICTED DEMAND DURING JULY 2016

Date	Time of peak demand	Generation within Delhi								Import from the Grid	Schedule from the Grid	OD(-) / UD(+)	Demand met	Shedding	Un-Restricted Demand
		RPH	GT	PPCL	Rithala	Bawana	Towmcl	BTPS	Total						
(1)	(2)	(3)	(4)	(5)	(6)	(7)	(8)		(9)= (3) to (8)	(10)	(11)	(12)= (11) - (10)	(13)= (11)+ (12)	(14)	(15)= (13)+ (14)
1	15.10.35	0	163	292	0	304	16	356	1131	5130	4949	181	6261	81	6342
2	00.00.03	0	157	292	0	254	16	328	1047	4351	4482	-131	5398	0	5398
3	22.38.27	0	66	264	0	-5	18	323	666	3978	4047	-69	4644	40	4684
4	23.04.54	0	73	264	0	-5	16	321	669	4493	4453	40	5162	0	5162
5	23.00.11	0	73	282	0	-5	16	352	718	4955	4899	56	5673	2	5675
6	15.40.34	0	98	302	0	252	16	312	980	4728	4777	-49	5708	0	5708
7	22.55.41	0	63	264	0	253	13	324	917	4800	4678	122	5717	10	5727
8	00.01.08	0	63	265	0	251	15	316	910	4602	4655	-53	5512	3	5515
9	15.35.12	0	103	205	0	253	16	314	891	4480	4459	21	5371	0	5371
10	23.12.03	0	107	261	0	254	18	322	962	4273	4186	87	5235	0	5235
11	23.05.56	0	108	262	0	257	16	325	968	4427	4455	-28	5395	3	5398
12	00.00.31	0	108	264	0	252	16	326	966	4274	4155	119	5240	0	5240
13	15.12.21	0	74	262	0	253	16	322	927	4461	4304	157	5388	0	5388
14	15.15.08	0	160	143	0	254	11	332	900	4592	4548	44	5492	0	5492
15	15.23.14	0	108	146	0	253	15	318	840	4414	4536	-122	5254	4	5258
16	00.00.12	0	85	262	0	253	14	316	930	3991	3873	118	4921	9	4930
17	00.00.48	0	72	152	0	-5	13	321	553	3591	3992	-401	4144	0	4144
18	14.52.14	0	71	149	0	-5	8	312	535	4062	3965	97	4597	0	4597
19	22.56.05	0	69	260	0	-4	11	330	666	4665	4648	17	5331	0	5331
20	22.57.00	0	100	261	0	-4	12	330	699	4892	4911	-19	5591	2	5593
21	15.29.47	0	113	261	0	301	14	345	1034	4853	4639	214	5887	0	5887
22	15.29.49	0	126	296	0	253	15	330	1020	4884	4886	-2	5904	89	5993
23	00.00.06	0	129	262	0	262	16	327	996	4621	4745	-124	5617	0	5617
24	15.30.00	0	103	261	0	255	14	325	958	4328	4459	-131	5286	0	5286
25	22.56.30	0	102	262	0	254	16	344	978	4633	4613	20	5611	0	5611
26	00.00.01	0	102	263	0	254	16	332	967	4384	4423	-39	5351	0	5351
27	11.06.41	0	92	263	0	254	16	320	945	3896	3576	320	4841	0	4841
28	15.05.00	0	109	264	0	254	16	320	963	3929	3997	-68	4892	2	4894
29	15.10.39	0	74	262	0	249	6	320	911	3717	3747	-30	4628	0	4628
30	11.57.19	0	74	101	0	252	16	320	763	3483	3280	203	4246	0	4246
31	15.30.00	0	74	150	0	253	16	320	813	3369	3314	55	4182	0	4182

SOURCEWISE SCHEDULED DRAWL FROM NORTHERN GRID AS WELL AS AVAILABILITY WITHIN DELHI FOR JULY 2016

A) AVAILABILITY FROM GENCO AND PRAGATI STNs. (all fig in MUs)

A (i) RPH	0.000
(ii) GT+STG	73.137
(iii) PRAGATI	180.521
(iv) RITHALA	0.000
(v) BAWANA CCGT	146.221
(vi) Timarpur ó Okhla	13.105
TOTAL	412.984
B) AVAILABILITY FROM BTPS	234.782
C) AUXILIARY CONSUMPTION OF GENERATING STNs. EXCLUDING BTPS	15.706
D) NET GENERATION AVAILABLE WITHIN DELHI(A+B-C)	632.060

B) SOURCE WISE SCHEDULED DRAWL FROM THE NORTHERN GRID

NAME OF THE STATION	AVAILABILITY AT POWER PLANT	AVAILABILITY AT DELHI PERIPHERY	ALLOCATION MADE BY NRLDC AT POWER PLANT	ALLOCATION MADE BY NRLDC AT DELHI PERIPHERY
B/SUIL	7.891	7.709	5.882	5.746
SALAL	53.914	52.664	40.219	39.287
SASAN	258.753	252.714	232.565	227.131
TANKAPUR	7.711	7.531	5.752	5.618
CHAMERA	26.460	25.845	19.737	19.278
CHAMERA -II	29.696	29.007	22.152	21.637
CHAMERA -III	21.061	20.573	15.711	15.347
DHAULIGANGA	21.564	21.055	16.087	15.707
SEWA -2	4.546	4.440	3.391	3.312
URI	32.650	31.892	24.357	23.792
URI-II	22.133	21.620	16.511	16.128
KOLDAM	0.000	0.000	0.000	0.000
KOTESHWAR	18.723	18.284	18.723	18.284
PARBATI3	14.813	14.472	11.050	10.796
RAMPUR	0.000	0.000	0.000	0.000
MUNDRA_UMPP	0.000	0.000	0.000	0.000
ANTA (GAS)	1.595	1.557	0.884	0.862
ANTA (RLNG)	23.545	23.007	0.000	0.000
ANTA (LIQUID)	6.058	5.910	0.000	0.000
DADRI (GAS)	26.691	26.073	12.411	12.128
DADRI (RLNG)	26.239	25.640	0.000	0.000
DADRI (LIQUID)	11.029	10.760	0.000	0.000
AURAIYA (GAS)	9.013	8.808	6.526	6.377
AURAIYA (RLNG)	37.772	36.895	0.000	0.000
AURAIYA (LIQUID)	4.260	4.157	0.000	0.000
SINGRAULI	104.088	101.671	93.397	91.226
RIHAND -I	53.902	52.666	40.705	39.768
RIHAND -II	88.979	86.912	62.011	60.567
RIHAND -III	93.203	91.038	71.341	69.681
UNCHAHAR-I	14.833	14.488	9.393	9.175
UNCHAHAR-II	33.250	32.478	21.380	20.882
UNCHAHAR-III	20.549	20.072	13.328	13.018
DADRI (TH)	539.028	526.509	229.188	223.871
DADRI (TH) STAGE-II	534.207	521.799	406.454	397.005
NAPP	30.482	29.774	30.482	29.774
RAPP 'B'	0.000	0.000	0.000	0.000
RAPP 'C'	36.952	36.088	36.952	36.088
NATHPA JHAKRI	106.870	104.372	79.724	77.860
DULASTI	30.888	30.172	23.044	22.510
TEHRI	28.733	28.059	28.733	28.059

NAME OF THE STATION	AVAILABILITY AT POWER PLANT	AVAILABILITY AT DELHI PERIPHERY	ALLOCATION MADE BY NRLDC AT POWER PLANT	ALLOCATION MADE BY NRLDC AT DELHI PERIPHERY
JHAJJAR	476.576	465.498	258.031	252.060
KHELGAON	33.774	32.990	19.221	18.775
KHELGAON-II	79.822	77.967	54.318	53.060
FARAKA	14.453	14.117	8.023	7.837
TALA	21.520	21.021	21.520	21.021
TALCHER	0.000	0.000	0.000	0.000
DVC	186.739	185.273	185.273	180.988
UTTAR PRADESH	7.038	6.919	6.919	6.759
TRIPUA	0.000	0.000	0.000	0.000
MEGHALAYA	0.340	0.338	0.338	0.330
UTTRANCHAL	0.000	0.000	0.000	0.000
DVC CTPS (BYPL)	0.000	0.000	0.000	0.000
DVC CTPS (NDPL)	0.000	0.000	0.000	0.000
METHON POWER(NDPL)LT-06	160.661	158.993	158.993	155.304
DVC MEJIA (LT-08)(BYPL)	66.395	65.872	65.872	64.344
URS	0.000	0.000	0.000	0.000
JAMMU & KASHMIR	306.234	304.101	304.101	297.042
HIMACHAL PRADESH	1.110	1.091	1.091	1.066
PUNJAB	0.000	0.000	0.000	0.000
MADHYA PRADESH	1.261	1.239	1.239	1.209
CHATTISHGARH	86.181	84.207	84.207	82.276
DVC LT-9	0.000	0.000	0.000	0.000
HARYANA (LT-05)	1.127	1.120	1.120	1.094
RAJASTHAN	47.413	46.728	46.728	45.650
ORISSA	140.156	138.724	138.724	135.481
RAJASTHAN(SOLAR) BRPL-LT36	4.064	4.005	4.005	3.912
RAJASTHAN(SOLAR) BYPL - LT-35	3.960	3.902	3.902	3.812
RAJASTHAN(SOLAR) TPDDL LT-31	3.841	3.786	3.786	3.698
TO JAMMU & KASHMIR	0.000	0.000	0.000	0.000
TO KARNATAKA	0.000	0.000	0.000	0.000
TO UTTAR PRADESH	-10.812	-11.058	-11.058	-11.323
TO MEGHALAYA	-0.246	-0.250	-0.250	-0.256
TO PUNJAB	-23.677	-23.842	-23.842	-24.407
TO CHATTISHGARH	0.000	0.000	0.000	0.000
TO UTTRANCHAL	0.000	0.000	0.000	0.000
TO KERALA	0.000	0.000	0.000	0.000
TO RAJASTHAN	0.000	0.000	0.000	0.000
TO WEST BENGAL	0.000	0.000	0.000	0.000
BTPS TO MP	0.000	0.000	0.000	0.000
TO HIMACHAL PRADESH	0.000	0.000	0.000	0.000
TO ORISSA	0.000	0.000	0.000	0.000
POWER EXCHANGE(IEX)	42.673	41.674	42.673	41.674
TO POWER EXCHANGE (IEX)	-176.940	-181.078	-176.940	-181.078
POWER EXCHANGE(PX)	0.000	0.000	0.000	0.000
TO POWER EXCHANGE (PX)	0.000	0.000	0.000	0.000
TO SHARE PROJECT (HARYANA)	-13.341	-13.657	-13.341	-13.657
TO SHARE PROJECT (PUNJAB)	-13.341	-13.657	-13.341	-13.657
TOTAL	3829.063	3742.734	2769.402	2693.928

C) AGENCY WISE BREAKUP OF ENERGY SCHEDULED DRAWL FROM THE GRID

NAME OF THE STATION	AVAILABILITY AT POWER PLANT	AVAILABILITY AT DELHI PERIPHERY	ALLOCATION MADE BY NRLDC AT POWER PLANT	ALLOCATION MADE BY NRLDC AT DELHI PERIPHERY
NTPC - NR	1628.242	1590.441	967.017	944.561
NTPC - ER	128.048	125.074	81.563	79.672
NHPC	273.327	266.979	203.894	199.158
NPC	67.434	65.862	67.434	65.862
SASAN	258.753	252.714	232.565	227.131
KOTESHWAR	18.723	18.284	18.723	18.284
MUNDRA_UMPP	0.000	0.000	0.000	0.000
NATHPA JHAKRI	106.870	104.372	79.724	77.860
TEHRI	28.733	28.059	28.733	28.059
TALA	21.520	21.021	21.520	21.021
JHAJJAR	476.576	465.498	258.031	252.060
TALCHER	0.000	0.000	0.000	0.000
RAJASTHAN SOLAR(BRPL)T-36	4.064	4.005	4.005	3.912
RAJASTHAN SOLAR(BYPL)T-35	3.960	3.902	3.902	3.812
RAJASTHAN SOLAR(TPDDL)T-31	3.841	3.786	3.786	3.698
DVC	186.739	185.273	185.273	180.988
UTTAR PRADESH	7.038	6.919	6.919	6.759
TRIPURA	0.000	0.000	0.000	0.000
MEGHALAYA	0.340	0.338	0.338	0.330
UTTRANCHAL	0.000	0.000	0.000	0.000
DVC CTPS (BYPL)	0.000	0.000	0.000	0.000
DVC CTPS (NDPL)	0.000	0.000	0.000	0.000
METHON POWER (NDPL)-LT-06	160.661	158.993	158.993	155.304
DVC MEJIA (LT-08)(BYPL)	66.395	65.872	65.872	64.344
URS	0.000	0.000	0.000	0.000
JAMMU & KASHMIR	306.234	304.101	304.101	297.042
HIMACHAL PRADESH	1.110	1.091	1.091	1.066
PUNJAB	0.000	0.000	0.000	0.000
MADHYA PRADESH	1.261	1.239	1.239	1.209
CHATTISHGARH	86.181	84.207	84.207	82.276
DVC (FOR NDPL) LT-09	0.000	0.000	0.000	0.000
HARYANA (LT -05)	1.127	1.120	1.120	1.094
RAJASTHAN	47.413	46.728	46.728	45.650
ORISSA	140.156	138.724	138.724	135.481
POWER EXCHANGE(IEX)	42.673	41.674	42.673	41.674
POWER EXCHANGE(PX)	0.000	0.000	0.000	0.000
TOTAL	4067.420	3986.275	3008.174	2938.305

D) AGENCY WISE BREAKUP OF ENERGY SCHEDULED BY NRLDC FOR EXPORT TO OTHER UTILITIES FROM DTL

NAME OF THE STATION	AVAILABILITY AT POWER PLANT	AVAILABILITY AT PERIPHERY	ALLOCATION MADE BY NRLDC AT POWER PLANT	ALLOCATION MADE BY NRLDC AT POWER PERIPHERY
TO JAMMU & KASHMIR	0.000	0.000	0.000	0.000
TO KARNATAKA	0.000	0.000	0.000	0.000
TO UTTAR PRADESH	-10.812	-11.058	-11.058	-11.323
TO MEGHALAYA	-0.246	-0.250	-0.250	-0.256
TO CHATTISHGARH	0.000	0.000	0.000	0.000
TO PUNJAB	-23.677	-23.842	-23.842	-24.407
TO UTTRANCHAL	0.000	0.000	0.000	0.000
TO KERALA	0.000	0.000	0.000	0.000
TO RAJASTHAN	0.000	0.000	0.000	0.000
TO WEST BENGAL	0.000	0.000	0.000	0.000
BTPS TO MP	0.000	0.000	0.000	0.000
TO HIMACHAL PRADESH	0.000	0.000	0.000	0.000
TO ORISSA	0.000	0.000	0.000	0.000
TO POWER EXCHANGE (IEX)	-176.940	-181.078	-176.940	-181.078
TO POWER EXCHANGE (PX)	0.000	0.000	0.000	0.000
TO SHARE PROJECT (HARYANA)	-13.341	-13.657	-13.341	-13.657
TO SHARE PROJECT (PUNJAB)	-13.341	-13.657	-13.341	-13.657
TOTAL	-238.357	-243.540	-238.772	-244.378
TOTAL SCHEDULED DRAWAL FROM THE GRID	3829.063	3742.734	2769.402	2693.928

TOTAL CONSUMPTION INCLUDING AUX. OF GENERATING STNs. EXCLUDING BTPS	3322.654
NET CONSUMPTION	3306.948
AVAILABILITY WITHIN DELHI	632.060
ACTUAL DRAWAL FROM THE GRID	2674.888
OVER DRAWAL(+)/UNDER DRAWAL(-) FROM THE GRID ON THE BASIS OF SCHEDULED ALLOCATION MADE BY NRLDC TO DELHI AT PERIPHERY	-19.040
LOAD SHEDDING	2.769
UNRESTRICTED DEMAND (GROSS)	3325.423
UNRESTRICTED DEMAND (NET)	3309.717
MAX. NET CONSUMPTION	126.447 ON 01.07.2016
MAX. LOAD SHEDDING	240MW ON 01.07.2016 AT 15.19HRS.
PEAK LOAD	Peak Demand during the month
DAY PEAK	6261MW AT 15.10.35HRS ON 01.07.2016
EVENING PEAK	5816MW AT 23.00HRS ON 22.07.2016
P.L.F. OF GENCO AND PRAGATI STNs.	RPH GT PRAGATI RITHALA BAWANA Timarpur Okhla
	SHEDDING AT PEAK TIME 81 MW 13 MW 0.00% 36.41% 73.53% 0.00% 14.34% 110.09%

DATE	No. of Under Freq. Relay Operated	Shedding due to under frequency relay operation in MUs					Shedding due to Grid Restrictions (Over drawal / low freq.)				
		BSES		NDPL	NDMC	TOTAL	BSES		NDPL	NDMC	MES
		BYPL	BRPL				BYPL	BRPL			
1	2	3	4	5	6	7=3 to 6	8	9	10	11	12
01.Jul.16	0	0.000	0.000	0.000	0.000	0.000	0.008	0.234	0.005	0.000	0.000
02.Jul.16	0	0.000	0.000	0.000	0.000	0.000	0.000	0.000	0.000	0.000	0.000
03.Jul.16	0	0.000	0.000	0.000	0.000	0.000	0.000	0.000	0.000	0.000	0.000
04.Jul.16	0	0.000	0.000	0.000	0.000	0.000	0.000	0.000	0.000	0.000	0.000
05.Jul.16	0	0.000	0.000	0.000	0.000	0.000	0.015	0.024	0.021	0.000	0.000
06.Jul.16	0	0.000	0.000	0.000	0.000	0.000	0.000	0.000	0.000	0.000	0.000
07.Jul.16	0	0.000	0.000	0.000	0.000	0.000	0.000	0.059	0.000	0.000	0.000
08.Jul.16	0	0.000	0.000	0.000	0.000	0.000	0.000	0.000	0.000	0.000	0.000
09.Jul.16	0	0.000	0.000	0.000	0.000	0.000	0.000	0.000	0.000	0.000	0.000
10.Jul.16	0	0.000	0.000	0.000	0.000	0.000	0.000	0.000	0.000	0.000	0.000
11.Jul.16	0	0.000	0.000	0.000	0.000	0.000	0.000	0.000	0.000	0.000	0.000
12.Jul.16	0	0.000	0.000	0.000	0.000	0.000	0.000	0.000	0.000	0.000	0.000
13.Jul.16	0	0.000	0.000	0.000	0.000	0.000	0.000	0.000	0.000	0.000	0.000
14.Jul.16	0	0.000	0.000	0.000	0.000	0.000	0.000	0.000	0.000	0.000	0.000
15.Jul.16	0	0.000	0.000	0.000	0.000	0.000	0.000	0.000	0.000	0.000	0.000
16.Jul.16	0	0.000	0.000	0.000	0.000	0.000	0.000	0.000	0.000	0.000	0.000
17.Jul.16	0	0.000	0.000	0.000	0.000	0.000	0.000	0.000	0.000	0.000	0.000
18.Jul.16	0	0.000	0.000	0.000	0.000	0.000	0.000	0.000	0.000	0.000	0.000
19.Jul.16	0	0.000	0.000	0.000	0.000	0.000	0.000	0.000	0.000	0.000	0.000
20.Jul.16	0	0.000	0.000	0.000	0.000	0.000	0.000	0.000	0.000	0.000	0.000
21.Jul.16	0	0.000	0.000	0.000	0.000	0.000	0.000	0.000	0.000	0.000	0.000
22.Jul.16	0	0.000	0.000	0.000	0.000	0.000	0.000	0.026	0.000	0.000	0.000
23.Jul.16	0	0.000	0.000	0.000	0.000	0.000	0.000	0.000	0.000	0.000	0.000
24.Jul.16	0	0.000	0.000	0.000	0.000	0.000	0.000	0.000	0.000	0.000	0.000
25.Jul.16	0	0.000	0.000	0.000	0.000	0.000	0.000	0.000	0.000	0.000	0.000
26.Jul.16	0	0.000	0.000	0.000	0.000	0.000	0.000	0.000	0.000	0.000	0.000
27.Jul.16	0	0.000	0.000	0.000	0.000	0.000	0.000	0.000	0.000	0.000	0.000
28.Jul.16	0	0.000	0.000	0.000	0.000	0.000	0.000	0.000	0.000	0.000	0.000
29.Jul.16	0	0.000	0.000	0.000	0.000	0.000	0.000	0.000	0.000	0.000	0.000
30.Jul.16	0	0.000	0.000	0.000	0.000	0.000	0.000	0.000	0.000	0.000	0.000
31.Jul.16	0	0.000	0.000	0.000	0.000	0.000	0.000	0.000	0.000	0.000	0.000
TOTAL	0	0.000	0.000	0.000	0.000	0.000	0.023	0.343	0.026	0.000	0.000

Date	Shedding due to Transmission/Grid Constraints in Central Sector Stations / TTC / ATC VOILATION				DUE TO NEW GRID CODE REGULATION DEVIATION			Shedding due to Transmission/Grid Constraints in Central sector stations				Total 24=8 to 23	Total shedding due to grid restrictions 25=7+24
	BSES		NDPL	NDMC	BSES		TPDDL	BSES		TPDDL	NDMC		
	BYPL	BRPL			BYPL	BRPL		BYPL	BRPL				
	13	14	15	16	17	18	19	20	21	22	23		
01.Jul.16	0.000	0.064	0.009	0.000	0.000	0.000	0.000	0.000	0.000	0.000	0.000	0.320	0.320
02.Jul.16	0.000	0.000	0.000	0.000	0.000	0.000	0.000	0.000	0.000	0.000	0.000	0.000	0.000
03.Jul.16	0.000	0.000	0.000	0.000	0.000	0.000	0.000	0.000	0.000	0.000	0.000	0.000	0.000
04.Jul.16	0.000	0.000	0.000	0.000	0.000	0.000	0.000	0.000	0.000	0.000	0.000	0.000	0.000
05.Jul.16	0.000	0.000	0.000	0.000	0.000	0.000	0.000	0.000	0.000	0.000	0.000	0.060	0.060
06.Jul.16	0.000	0.000	0.000	0.000	0.000	0.000	0.000	0.000	0.000	0.000	0.000	0.000	0.000
07.Jul.16	0.000	0.000	0.000	0.000	0.000	0.000	0.000	0.000	0.000	0.000	0.000	0.059	0.059
08.Jul.16	0.000	0.000	0.000	0.000	0.000	0.000	0.000	0.000	0.000	0.000	0.000	0.000	0.000
09.Jul.16	0.000	0.000	0.000	0.000	0.000	0.000	0.000	0.000	0.000	0.000	0.000	0.000	0.000
10.Jul.16	0.000	0.000	0.000	0.000	0.000	0.000	0.000	0.000	0.000	0.000	0.000	0.000	0.000
11.Jul.16	0.000	0.000	0.000	0.000	0.000	0.000	0.000	0.000	0.000	0.000	0.000	0.000	0.000
12.Jul.16	0.000	0.000	0.000	0.000	0.000	0.000	0.000	0.000	0.000	0.000	0.000	0.000	0.000
13.Jul.16	0.000	0.000	0.000	0.000	0.000	0.000	0.000	0.000	0.000	0.000	0.000	0.000	0.000
14.Jul.16	0.000	0.000	0.000	0.000	0.000	0.000	0.000	0.000	0.000	0.000	0.000	0.000	0.000
15.Jul.16	0.000	0.000	0.000	0.000	0.000	0.000	0.000	0.000	0.000	0.000	0.000	0.000	0.000
16.Jul.16	0.000	0.000	0.000	0.000	0.000	0.000	0.000	0.000	0.000	0.000	0.000	0.000	0.000
17.Jul.16	0.000	0.000	0.000	0.000	0.000	0.000	0.000	0.000	0.000	0.000	0.000	0.000	0.000
18.Jul.16	0.000	0.000	0.000	0.000	0.000	0.000	0.000	0.000	0.000	0.000	0.000	0.000	0.000
19.Jul.16	0.000	0.000	0.000	0.000	0.000	0.000	0.000	0.000	0.000	0.000	0.000	0.000	0.000
20.Jul.16	0.000	0.000	0.000	0.000	0.000	0.000	0.000	0.000	0.000	0.000	0.000	0.000	0.000
21.Jul.16	0.000	0.000	0.000	0.000	0.000	0.000	0.000	0.000	0.000	0.000	0.000	0.000	0.000
22.Jul.16	0.000	0.000	0.000	0.000	0.000	0.000	0.000	0.000	0.000	0.000	0.000	0.026	0.026
23.Jul.16	0.000	0.000	0.000	0.000	0.000	0.000	0.000	0.000	0.000	0.000	0.000	0.000	0.000
24.Jul.16	0.000	0.000	0.000	0.000	0.000	0.000	0.000	0.000	0.000	0.000	0.000	0.000	0.000
25.Jul.16	0.000	0.000	0.000	0.000	0.000	0.000	0.000	0.000	0.000	0.000	0.000	0.000	0.000
26.Jul.16	0.000	0.000	0.000	0.000	0.000	0.000	0.000	0.000	0.000	0.000	0.000	0.000	0.000
27.Jul.16	0.000	0.000	0.000	0.000	0.000	0.000	0.000	0.000	0.000	0.000	0.000	0.000	0.000
28.Jul.16	0.000	0.000	0.000	0.000	0.000	0.000	0.000	0.000	0.000	0.000	0.000	0.000	0.000
29.Jul.16	0.000	0.000	0.000	0.000	0.000	0.000	0.000	0.000	0.000	0.000	0.000	0.000	0.000
30.Jul.16	0.000	0.000	0.000	0.000	0.000	0.000	0.000	0.000	0.000	0.000	0.000	0.000	0.000
31.Jul.16	0.000	0.000	0.000	0.000	0.000	0.000	0.000	0.000	0.000	0.000	0.000	0.000	0.000
TOTAL	0.000	0.064	0.009	0.000	0.000	0.000	0.000	0.000	0.000	0.000	0.000	0.465	0.465

Date	DUE TO T&D CONSTRAINTS IN DELHI SYSTEM								
	DTL					DISCOMS			
	BSES		NDPL	NDMC	MES	BSES		NDPL	NDMC
	BYPL	BRPL				BYPL	BRPL		
26	27	28	29	30	31	32	33	34	
01.Jul.16	0.000	0.000	0.000	0.000	0.000	0.002	0.048	0.002	0.000
02.Jul.16	0.000	0.003	0.000	0.000	0.000	0.011	0.037	0.0002	0.000
03.Jul.16	0.000	0.000	0.002	0.000	0.000	0.003	0.053	0.000	0.000
04.Jul.16	0.002	0.000	0.021	0.000	0.000	0.016	0.025	0.000	0.000
05.Jul.16	0.000	0.015	0.000	0.000	0.000	0.000	0.001	0.000	0.000
06.Jul.16	0.000	0.000	0.002	0.000	0.000	0.003	0.027	0.003	0.000
07.Jul.16	0.000	0.000	0.000	0.000	0.000	0.021	0.012	0.001	0.000
08.Jul.16	0.001	0.007	0.003	0.000	0.000	0.000	0.018	0.003	0.000
09.Jul.16	0.000	0.000	0.000	0.000	0.000	0.004	0.004	0.000	0.000
10.Jul.16	0.000	0.020	0.000	0.000	0.000	0.000	0.007	0.000	0.000
11.Jul.16	0.017	0.070	0.000	0.000	0.000	0.000	0.022	0.000	0.000
12.Jul.16	0.003	0.010	0.028	0.000	0.000	0.000	0.058	0.015	0.000
13.Jul.16	0.019	0.000	0.000	0.000	0.000	0.040	0.003	0.009	0.000
14.Jul.16	0.000	0.018	0.000	0.000	0.000	0.015	0.049	0.000	0.000
15.Jul.16	0.001	0.000	0.002	0.000	0.000	0.034	0.063	0.000	0.000
16.Jul.16	0.005	0.012	0.000	0.000	0.000	0.004	0.032	0.008	0.000
17.Jul.16	0.004	0.000	0.001	0.000	0.000	0.002	0.000	0.000	0.000
18.Jul.16	0.000	0.028	0.001	0.000	0.000	0.000	0.071	0.003	0.000
19.Jul.16	0.000	0.000	0.006	0.000	0.000	0.000	0.187	0.000	0.000
20.Jul.16	0.003	0.017	0.014	0.000	0.000	0.000	0.176	0.029	0.000
21.Jul.16	0.028	0.000	0.000	0.000	0.000	0.029	0.056	0.003	0.000
22.Jul.16	0.005	0.006	0.059	0.000	0.000	0.001	0.066	0.005	0.000
23.Jul.16	0.000	0.005	0.000	0.000	0.000	0.011	0.221	0.000	0.000
24.Jul.16	0.000	0.000	0.000	0.000	0.000	0.024	0.012	0.000	0.000
25.Jul.16	0.000	0.000	0.000	0.000	0.000	0.000	0.000	0.002	0.000
26.Jul.16	0.001	0.000	0.000	0.000	0.000	0.014	0.048	0.000	0.000
27.Jul.16	0.000	0.000	0.000	0.000	0.000	0.009	0.062	0.000	0.000
28.Jul.16	0.000	0.000	0.000	0.000	0.000	0.007	0.073	0.000	0.000
29.Jul.16	0.002	0.000	0.000	0.000	0.000	0.000	0.007	0.001	0.000
30.Jul.16	0.000	0.000	0.000	0.000	0.000	0.000	0.013	0.001	0.000
31.Jul.16	0.001	0.000	0.003	0.000	0.000	0.018	0.003	0.001	0.000
TOTAL	0.092	0.211	0.142	0.000	0.000	0.268	1.454	0.086	0.000

ALL FIGURES IN MUS

DATE	OTHER AGENCIES LIKE GENCO, BBMB, BTPS ETC.				THEFT PRONE SHEDDING			TOTAL SHEDDING DUE TO T&D CONSTS. & THEFT PRONE	GRAND TOTAL
	BSES		NDPL	NDMC	BSES		NDPL		
	BYPL	BRPL			BYPL	BRPL			
1	35	36	37	38	39	40	41	42= 26 to 41	43 = 25 + 42
01.Jul.16	0.000	0.000	0.001	0.000	0.000	0.000	0.000	0.053	0.373
02.Jul.16	0.000	0.000	0.000	0.000	0.000	0.000	0.000	0.051	0.051
03.Jul.16	0.000	0.000	0.000	0.000	0.000	0.000	0.009	0.067	0.067
04.Jul.16	0.000	0.000	0.000	0.000	0.000	0.000	0.000	0.064	0.064
05.Jul.16	0.000	0.000	0.000	0.000	0.000	0.000	0.000	0.016	0.076
06.Jul.16	0.000	0.000	0.000	0.000	0.000	0.000	0.000	0.035	0.035
07.Jul.16	0.000	0.000	0.000	0.000	0.000	0.000	0.005	0.039	0.098
08.Jul.16	0.000	0.000	0.000	0.000	0.000	0.000	0.000	0.032	0.032
09.Jul.16	0.000	0.006	0.000	0.000	0.000	0.000	0.000	0.014	0.014
10.Jul.16	0.000	0.000	0.000	0.000	0.000	0.000	0.000	0.027	0.027
11.Jul.16	0.000	0.000	0.000	0.000	0.000	0.000	0.000	0.109	0.109
12.Jul.16	0.000	0.000	0.000	0.000	0.000	0.000	0.000	0.114	0.114
13.Jul.16	0.000	0.000	0.010	0.000	0.000	0.000	0.000	0.081	0.081
14.Jul.16	0.000	0.000	0.001	0.000	0.000	0.000	0.000	0.083	0.083
15.Jul.16	0.000	0.000	0.000	0.000	0.000	0.000	0.000	0.100	0.100
16.Jul.16	0.000	0.000	0.000	0.000	0.000	0.000	0.000	0.061	0.061
17.Jul.16	0.000	0.000	0.000	0.000	0.000	0.000	0.000	0.007	0.007
18.Jul.16	0.000	0.000	0.001	0.000	0.000	0.000	0.000	0.104	0.104
19.Jul.16	0.000	0.000	0.000	0.000	0.000	0.000	0.000	0.193	0.193
20.Jul.16	0.000	0.000	0.000	0.000	0.000	0.000	0.000	0.239	0.239
21.Jul.16	0.000	0.000	0.000	0.000	0.000	0.000	0.005	0.121	0.121
22.Jul.16	0.000	0.000	0.000	0.000	0.000	0.000	0.002	0.144	0.170
23.Jul.16	0.000	0.000	0.000	0.000	0.000	0.000	0.001	0.238	0.238
24.Jul.16	0.000	0.000	0.000	0.000	0.000	0.000	0.001	0.037	0.037
25.Jul.16	0.000	0.000	0.000	0.000	0.000	0.000	0.000	0.002	0.002
26.Jul.16	0.000	0.000	0.000	0.000	0.000	0.000	0.000	0.063	0.063
27.Jul.16	0.000	0.000	0.000	0.000	0.000	0.000	0.009	0.080	0.080
28.Jul.16	0.000	0.000	0.000	0.000	0.000	0.000	0.000	0.080	0.080
29.Jul.16	0.000	0.000	0.000	0.000	0.000	0.000	0.000	0.010	0.010
30.Jul.16	0.000	0.000	0.000	0.000	0.000	0.000	0.000	0.014	0.014
31.Jul.16	0.000	0.000	0.000	0.000	0.000	0.000	0.000	0.026	0.026
TOTAL	0.000	0.006	0.013	0.000	0.000	0.000	0.032	2.304	2.769

DATE	(NET CONS.)	MAXI. DEMAND MET DURING THE DAY	TIME OF OCCURRENCE OF MAX DEMAND	SHEDDING AT THIS TIME	UN-RESTRICTED DEMAND	MAXIMUM UN-RESTRICTED DEMAND DURING THE DAY	TIME OF MAX. UN-REST. DEMAND	DEMAND AT THAT TIME	SHEDDING AT THAT TIME
	In Mus.	IN MW	IN HRS.	IN MW	IN MW	IN MW	HRS.	IN MW	IN MW
1	32	33	34	35	36=33+35	37=39+40	38	39	40
01.Jul.16	126.447	6261	15:10:35	81	6342	6342	15:10:35	6261	81
02.Jul.16	103.394	5398	00:00:03	0	5398	5398	00:00:03	5398	0
03.Jul.16	93.878	4644	22:38:27	40	4684	4684	22:38:27	4644	40
04.Jul.16	103.806	5162	23:04:54	0	5162	5162	23:04:54	5162	0
05.Jul.16	113.436	5673	23:00:11	2	5675	5675	23:00:11	5673	2
06.Jul.16	117.325	5708	15:40:34	0	5708	5708	15:40:34	5708	0
07.Jul.16	115.117	5717	22:55:41	10	5727	5727	22:55:41	5717	10
08.Jul.16	113.512	5512	00:01:08	3	5515	5515	00:01:08	5512	3
09.Jul.16	114.899	5371	15:35:12	0	5371	5371	15:35:12	5371	0
10.Jul.16	107.833	5235	23:12:03	0	5235	5235	23:12:03	5235	0
11.Jul.16	112.586	5395	23:05:56	3	5398	5398	23:05:56	5395	3
12.Jul.16	108.647	5240	00:00:31	0	5240	5240	00:00:31	5240	0
13.Jul.16	108.844	5388	15:12:21	0	5388	5388	15:12:21	5388	0
14.Jul.16	109.830	5492	15:15:08	0	5492	5492	15:15:08	5492	0
15.Jul.16	107.924	5254	15:23:14	4	5258	5258	15:23:14	5254	4
16.Jul.16	94.460	4921	00:00:12	9	4930	4930	00:00:12	4921	9
17.Jul.16	87.747	4072	00:00:48	0	4072	4072	00:00:48	4072	0
18.Jul.16	93.660	4597	14:52:14	0	4597	4597	14:52:14	4597	0
19.Jul.16	103.764	5331	22:56:05	0	5331	5331	22:56:05	5331	0
20.Jul.16	112.160	5591	22:57:00	2	5593	5593	22:57:00	5591	2
21.Jul.16	117.460	5887	15:29:47	0	5887	5887	15:29:47	5887	0
22.Jul.16	121.400	5904	15:29:49	89	5993	5993	15:29:49	5904	89
23.Jul.16	113.342	5617	00:00:06	0	5617	5617	00:00:06	5617	0
24.Jul.16	107.186	5286	23:10:07	0	5286	5286	23:10:07	5286	0
25.Jul.16	113.783	5611	22:56:30	0	5611	5611	22:56:30	5611	0
26.Jul.16	111.448	5351	00:00:01	0	5351	5351	00:00:01	5351	0
27.Jul.16	100.040	4841	11:06:41	0	4841	4841	11:06:41	4841	0
28.Jul.16	98.815	4892	15:05	2	4894	4894	15:05	4892	2
29.Jul.16	95.152	4625	15:10:29	0	4625	4625	15:10:29	4625	0
30.Jul.16	91.525	4246	11:57:19	0	4246	4246	11:57:19	4246	0
31.Jul.16	87.528	4182	23:00	0	4182	4182	23:00	4182	0
TOTAL	3306.948	6261	15:10:35	81	6342	6342	15:10:35	6261	81
		01.07.16			01.07.16				

10 **LOAD PATTERN OF DELHI ON THE DAY OF PEAK DEMAND MET DURING JULY 2016 ON 01.07.2016- 6261MW AT 15.10.35HRS.**

All figures in MW

Hrs.	Demand	Load Shedding	Un-Restricted Demand
00:00	5940	10	5950
01:00	5677	0	5677
02:00	5242	2	5244
03:00	5001	5	5006
04:00	4891	5	4896
05:00	4731	0	4731
06:00	4480	0	4480
07:00	4356	0	4356
08:00	4397	0	4397
09:00	4526	0	4526
10:00	5128	0	5128
11:00	5283	0	5283
12:00	5552	0	5552
13:00	5631	0	5631
14:00	5763	53	5816
15:00	6208	47	6255
15:10:35	6261	81	6342
16:00	6135	41	6176
17:00	5765	50	5815
18:00	5266	9	5275
19:00	5206	0	5206
20:00	5422	0	5422
21:00	5456	0	5456
22:00	5598	0	5598
23:00	5633	2	5635
Total (IN MUS)	126.447	0.373	126.820



11 LOAD PATTERN OF DELHI ON THE DAY OF MAXIMUM UN-RESTRICTED DEMAND DURING JULY 2016 ON 01.07.2016- 6342MW AT 15.10.35HRS.

All figures in MW

Hrs.	Demand	Load Shedding	Un-Restricted Demand
00:00	5940	10	5950
01:00	5677	0	5677
02:00	5242	2	5244
03:00	5001	5	5006
04:00	4891	5	4896
05:00	4731	0	4731
06:00	4480	0	4480
07:00	4356	0	4356
08:00	4397	0	4397
09:00	4526	0	4526
10:00	5128	0	5128
11:00	5283	0	5283
12:00	5552	0	5552
13:00	5631	0	5631
14:00	5763	53	5816
15:00	6208	47	6255
15:10:35	6261	81	6342
16:00	6135	41	6176
17:00	5765	50	5815
18:00	5266	9	5275
19:00	5206	0	5206
20:00	5422	0	5422
21:00	5456	0	5456
22:00	5598	0	5598
23:00	5633	2	5635
Total (IN MUS)	126.447	0.373	126.820



**12 LOAD PATTERN OF DELHI ON THE DAY OF MAXIMUM ENERGY CONSUMED
DURING JULY 2016 – 01.07.2016 – 126.447Mus All figures in MW**

Hrs.	Demand	Load Shedding	Un-Restricted Demand
00:00	5940	10	5950
01:00	5677	0	5677
02:00	5242	2	5244
03:00	5001	5	5006
04:00	4891	5	4896
05:00	4731	0	4731
06:00	4480	0	4480
07:00	4356	0	4356
08:00	4397	0	4397
09:00	4526	0	4526
10:00	5128	0	5128
11:00	5283	0	5283
12:00	5552	0	5552
13:00	5631	0	5631
14:00	5763	53	5816
15:00	6208	47	6255
15:10:35	6261	81	6342
16:00	6135	41	6176
17:00	5765	50	5815
18:00	5266	9	5275
19:00	5206	0	5206
20:00	5422	0	5422
21:00	5456	0	5456
22:00	5598	0	5598
23:00	5633	2	5635
Total (IN MUS)	126.447	0.373	126.820



13 LOAD PATTERN OF DELHI ON THE DAY OF MAXIMUM UNRESTRICTED ENERGY DEMAND DURING JULY 2016 – 01.07.2016 – 126.820 Mus

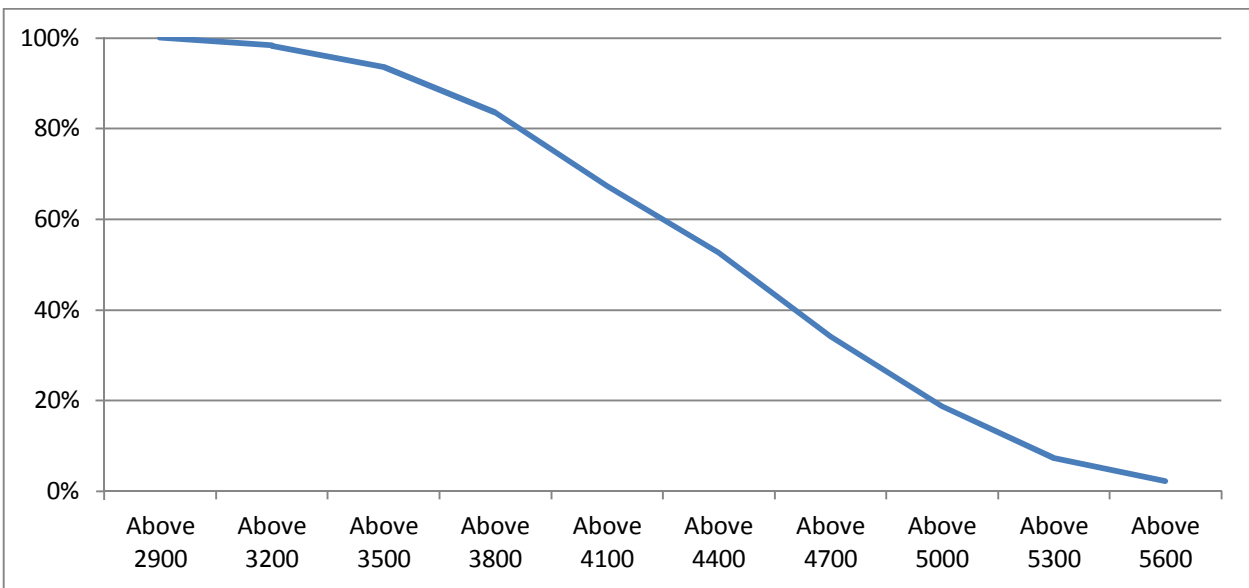
All figures in MW

Hrs.	Demand	Load Shedding	Un-Restricted Demand
00:00	5940	10	5950
01:00	5677	0	5677
02:00	5242	2	5244
03:00	5001	5	5006
04:00	4891	5	4896
05:00	4731	0	4731
06:00	4480	0	4480
07:00	4356	0	4356
08:00	4397	0	4397
09:00	4526	0	4526
10:00	5128	0	5128
11:00	5283	0	5283
12:00	5552	0	5552
13:00	5631	0	5631
14:00	5763	53	5816
15:00	6208	47	6255
15:10:35	6261	81	6342
16:00	6135	41	6176
17:00	5765	50	5815
18:00	5266	9	5275
19:00	5206	0	5206
20:00	5422	0	5422
21:00	5456	0	5456
22:00	5598	0	5598
23:00	5633	2	5635
Total (IN MUS)	126.447	0.373	126.820



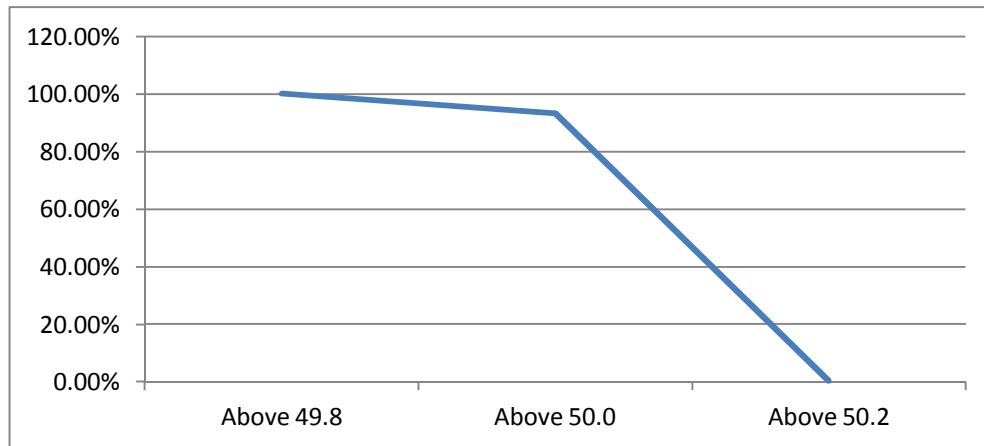
14 LOAD DURATION CURVE FOR JULY 2016

Load in MW	Percentage of Time
Above 2900	100%
Above 3200	98.32%
Above 3500	93.55%
Above 3800	83.53%
Above 4100	67.41%
Above 4400	52.65%
Above 4700	34.14%
Above 5000	18.75%
Above 5300	7.29%
Above 5600	2.32%



FREQUENCY ANALYSIS FOR THE MONTH OF JULY 2016

Frequency Range in Hz.	Percentage of time
Above 49.8	100.00%
Above 50.0	93.21%
Above 50.2	0.44%



16 VOLTAGE PROFILE OF 220 KV SUB-STATIONS IN DELHI DURING JULY 2016

All figures in kV

Date	NARELA		GAZIPUR	
	Max	Min	Max	Min
01.Jul.16	226.08	207.38	228.01	206.60
02.Jul.16	227.24	217.18	230.46	--
03.Jul.16	228.01	215.76	229.82	211.89
04.Jul.16	226.34	213.05	229.95	205.57
05.Jul.16	218.86	218.86	228.69	206.60
06.Jul.16	218.86	218.86	225.69	199.25
07.Jul.16	218.86	218.86	222.08	201.06
08.Jul.16	218.86	218.86	223.63	204.41
09.Jul.16	218.86	218.86	224.92	209.96
10.Jul.16	218.86	218.86	224.01	208.02
11.Jul.16	218.86	218.86	222.98	207.64
12.Jul.16	218.86	218.86	219.11	208.02
13.Jul.16	218.86	218.86	220.79	206.60
14.Jul.16	218.86	218.86	220.53	207.38
15.Jul.16	218.86	218.86	224.01	209.57
16.Jul.16	218.86	218.86	227.63	212.79
17.Jul.16	218.86	218.86	228.79	216.02
18.Jul.16	218.86	218.86	226.34	208.80
19.Jul.16	218.86	218.86	225.43	205.96
20.Jul.16	218.86	218.86	221.58	203.38
21.Jul.16	218.86	218.86	220.40	203.64
22.Jul.16	218.86	218.86	224.01	203.64
23.Jul.16	218.86	218.86	225.69	211.50
24.Jul.16	218.86	218.86	224.66	--
25.Jul.16	218.86	218.86	213.70	193.03
26.Jul.16	218.86	218.86	214.34	193.96
27.Jul.16	218.86	218.86	215.63	198.35
28.Jul.16	218.86	218.86	215.37	198.37
29.Jul.16	222.85	216.52	215.37	200.41
30.Jul.16	228.14	214.60	211.76	205.44
31.Jul.16	226.21	214.99	210.73	210.73

17 VOLTAGE PROFILE OF 400 KV SUB-STATIONS IN DELHI DURING JULY 2016

All figures in kV

Date	400kV Bamnauli Grid Sub-Station				
	Max KV	Max Time	Min KV	Min Time	Average KV
01.Jul.16	408.94	05.04	377.05	14.49	396.37
02.Jul.16	414.57	07.56	393.23	19.51	403.27
03.Jul.16	413.40	06.04	388.78	22.38	403.39
04.Jul.16	408.94	07.05	383.39	22.38	397.22
05.Jul.16	408.71	06.03	385.03	14.23	397.21
06.Jul.16	408.48	03.06	380.57	14.53	397.92
07.Jul.16	409.18	17.58	385.50	11.51	396.83
08.Jul.16	406.83	08.05	389.72	14.50	397.27
09.Jul.16	409.18	06.27	378.25	22.35	399.82
10.Jul.16	409.88	06.05	384.56	22.31	399.30
11.Jul.16	410.12	06.01	382.68	14.26	395.97
12.Jul.16	409.65	06.07	388.78	22.36	397.46
13.Jul.16	407.30	07.24	385.26	14.55	395.51
14.Jul.16	406.37	06.01	386.20	00.17	396.71
15.Jul.16	411.06	06.01	389.95	14.25	398.92
16.Jul.16	413.87	07.32	392.76	19.38	403.35
17.Jul.16	415.51	06.01	394.64	20.11	406.49
18.Jul.16	411.52	03.57	--	18.25	396.73
19.Jul.16	413.67	06.00	382.21	14.40	400.43
20.Jul.16	406.71	06.03	381.98	14.36	395.78
21.Jul.16	408.71	08.03	385.50	22.27	398.15
22.Jul.16	404.25	18.43	387.37	20.09	397.88
23.Jul.16	406.60	18.01	390.18	14.50	395.57
24.Jul.16	411.29	18.01	392.30	22.09	402.65
25.Jul.16	408.48	06.02	389.72	22.07	399.01
26.Jul.16	409.16	08.00	390.19	12.20	400.13
27.Jul.16	412.46	06.04	390.42	22.16	401.79
28.Jul.16	411.29	06.02	395.81	22.23	403.59
29.Jul.16	411.52	04.00	390.89	19.43	403.03
30.Jul.16	412.70	06.00	389.95	19.46	402.63
31.Jul.16	412.23	06.02	391.36	19.44	404.68

Date	400kV Bawana Grid Sub-Station				
	Max KV	Max Time	Min KV	Min Time	Average KV
01.Jul.16	417.15	06.07	389.72	14.48	405.54
02.Jul.16	423.72	07.57	404.49	19.51	413.59
03.Jul.16	422.55	08.24	401.91	19.47	413.41
04.Jul.16	418.56	07.06	395.81	14.24	406.84
05.Jul.16	415.98	06.02	392.30	14.23	404.56
06.Jul.16	416.21	06.03	390.89	14.56	406.20
07.Jul.16	413.40	17.59	392.06	14.41	403.64
08.Jul.16	412.70	06.07	399.10	14.57	405.19
09.Jul.16	415.51	06.02	400.50	22.42	408.25
10.Jul.16	417.15	06.03	398.15	22.29	408.77
11.Jul.16	417.15	06.01	394.41	14.26	404.89
12.Jul.16	416.68	06.02	399.10	00.18	404.94
13.Jul.16	413.87	06.01	395.58	22.16	404.16
14.Jul.16	413.87	06.02	396.75	14.24	404.82
15.Jul.16	418.32	06.01	396.75	14.30	406.64
16.Jul.16	417.15	05.04	400.97	19.50	411.37
17.Jul.16	423.01	06.02	406.37	20.12	415.28
18.Jul.16	420.67	03.55	396.99	19.48	408.79
19.Jul.16	418.56	06.00	392.06	19.53	406.60
20.Jul.16	415.04	06.03	390.89	14.39	403.31
21.Jul.16	414.57	06.04	395.58	14.54	405.00
22.Jul.16	409.17	10.01	395.11	14.47	403.49
23.Jul.16	418.09	07.04	400.50	14.49	408.50
24.Jul.16	418.09	18.01	401.68	22.09	410.46
25.Jul.16	415.74	06.02	398.39	22.11	406.84
26.Jul.16	415.04	06.03	398.16	12.14	407.61
27.Jul.16	419.26	06.02	401.91	22.17	410.11
28.Jul.16	418.09	06.02	405.43	14.44	411.15
29.Jul.16	420.42	04.02	402.14	19.43	412.62
30.Jul.16	422.55	06.02	400.97	19.46	412.41
31.Jul.16	419.03	04.00	401.68	19.44	413.46

18 DETAILS OF LUMPED CAPACITORS AT NEAREST 220 KV SUBSTATION

Sl. No	SUB-STATION	INSTALLED CAPACITY			
		66KV	33kV	11kV	TOTAL
1	IP YARD		30.00		30.00
1	Kamla Market			16.35	16.35
2	Minto Road				0.00
3	GB Pant Hosp			10.48	10.48
4	Delhi Gate			16.30	16.30
5	Tilakmarg			5.04	5.04
7	Cannaught Place			10.08	10.08
8	Kilokri		10.08	10.48	20.56
9	NDSE-II				0.00
11	Nizamuddin				0.00
12	Exhibition-I				0.00
13	Exhibition-II				0.00
14	Defence Colony				0.00
15	IG Stadium		10.08	5.45	15.53
16	Lajpat Nagar				0.00
17	IP Estate			10.90	10.90
		0.00	50.16	85.08	135.24
2	Electric Lane				
1	Electric Lane			5.04	5.04
2	Scindia House			10.44	10.44
3	Mandi House			10.80	10.80
4	Raisina Road			10.08	10.08
5	Raja Bazar			10.08	10.08
		0.00	0.00	46.44	46.44
3	RPH Station		20.00		20.00
1	Lahori Gate			10.49	10.49
2	Jama Masjid			10.48	10.48
4	Kamla Market				0.00
5	Minto Road			10.90	10.90
6	GB Pant Hosp				0.00
7	IG Stadium				0.00
		0.00	20.00	31.87	51.87
4	Parkstreet S/stn	20.00	20.00		40.00
1	Shastri Park		10.90	5.45	16.35
2	Faiz Road			18.05	18.05
3	Motia Khan			16.30	16.30
4	Prasad Nagar			16.25	16.25
5	Anand Parbat			10.80	10.80
6	Shankar Road			10.44	10.44
7	Rama Road			0.00	0.00
8	Baird Road			10.08	10.08
9	Hanuman Road			10.08	10.08
10	Pusa			5.44	5.44
11	Ridge Valley			0.00	0.00
12	B. D. Marg			5.40	5.40
13	Nirman Bhawan			5.04	5.04
		20.00	30.90	113.33	164.23
5	Naraina S/stn		20.00	5.04	25.04
1	DMS			10.85	10.85
2	Mayapuri		10.87	10.40	21.27
3	Inderpuri		13.26	5.04	18.30
4	Rewari line				0.00
5	Khyber Lane		10.05		10.05
6	Kirbi Place		10.05		10.05
7	Payal			10.08	10.08
8	A-21 Naraina			4.80	4.80
8	Saraswati Garden			10.08	10.08
		0.00	64.23	56.29	120.52

Sl. No	SUB-STATION	INSTALLED CAPACITY			
		66KV	33kV	11kV	TOTAL
6	Mehrauli S/stn	80.00		5.04	85.04
1	Adchini			14.61	14.61
2	Andheria Bagh			10.85	10.85
3	IIT			10.90	10.90
4	JNU		10.03	10.03	20.06
5	Bijwasan			15.47	15.47
6	DC Saket		10.08	9.98	20.06
7	Malviya Nagar				0.00
8	C Dot			10.48	10.48
9	Vasant kunj B-Blk	21.79		10.90	32.69
10	Vasant kunj C-Blk	20.16		10.48	30.64
11	Palam				0.00
12	IGNOU			5.04	5.04
13	R. K. Puram-I			10.07	10.07
14	Vasant Vihar			19.25	19.25
15	Pusp Vihar			10.44	10.44
16	Bhikaji Cama Place		10.08	10.07	20.15
		121.95	30.19	163.61	315.75
7	Vasantkunj S/stn	40.00		5.04	45.04
1	R. K. Puram-II			10.80	10.80
2	Vasant kunj C-Blk				0.00
3	Vasant kunj D-Blk			9.63	9.63
4	Ridge Valley				0.00
		40.00	0.00	25.47	65.47
8	Okhla S/stn	60.00	10.00	5.04	75.04
1	Balaji			10.80	10.80
2	East of Kailash			15.89	15.89
3	Alaknanda			16.30	16.30
4	Malviya Nagar	21.79	20.16	10.85	52.80
5	Masjid Moth			16.30	16.30
6	Nehru Place			21.34	21.34
7	Okhla Ph-I	21.79		16.30	38.09
8	Okhla Ph-II		20.93	15.47	36.40
9	Shivalik			10.80	10.80
10	Batra			15.90	15.90
11	VSNL			10.90	10.90
12	Siri Fort			10.49	10.49
13	Tuglakabad			10.85	10.85
		103.58	51.09	187.23	341.90
9	Lodhi Road S/stn			20.00	20.00
1	Defence Colony			14.85	14.85
2	Hudco			10.90	10.90
3	Lajpat Nagar			10.90	10.90
4	Nizamuddin			10.44	10.44
5	Vidyut Bhawan (Shahjahan Rd)			10.80	10.80
6	Ex. Gr. II			0.00	0.00
7	IHC			0.00	0.00
		0.00	0.00	77.89	77.89
10	Sarita Vihar S/stn	20.00		5.04	25.04
1	Sarita Vihar			10.07	10.07
2	MCIE			10.06	10.06
3	Mathura Road	20.16		11.69	31.85
4	Jamia Millia			10.89	10.89
5	Sarai Julena		10.08	16.29	26.37
6	Jasola			5.44	5.44
		40.16	10.08	69.48	119.72

Sl. No	SUB-STATION	INSTALLED CAPACITY			
		66KV	33kV	11kV	TOTAL
11	Wazirabad				
1	Bhagirathi		14.40	18.10	32.50
2	Ghonda	21.79	22.56	15.94	60.29
3	Seelam Pur		10.08	21.39	31.47
4	Dwarkapuri			15.46	15.46
5	Nandnagri	20.16		16.35	36.51
6	Yamuna Vihar			14.40	14.40
7	East of Loni Road			18.00	18.00
8	Shastri Park			10.90	10.90
9	Karawal Nagar			5.40	5.40
10	Sonia Vihar			14.70	14.70
		41.95	47.04	150.64	239.63
12	Geeta Colony				
1	Geeta Colony			10.49	10.49
2	Kanti Nagar			18.10	18.10
3	Kailash Nagar			15.48	15.48
4	Seelam Pur				0.00
5	Shakar Pur			10.80	10.80
		0.00	0.00	54.87	54.87
13	Gazipur S/stn	40.00		5.04	45.04
1	Dallupura	28.80		10.90	39.70
2	Vivek Vihar			9.57	9.57
3	GT Road			10.85	10.85
4	Kondli	20.16		10.85	31.01
5	MVR-I			10.90	10.90
6	MVR-II	20.16		10.44	30.60
7	PPG Ind. Area			10.06	10.06
		109.12	0.00	78.61	187.73
14	Patparganj S/stn	40.00	20.00	5.04	65.04
1	GH-I	19.89		10.45	30.34
2	GH-II	20.09		10.90	30.99
3	CBD		10.03	15.48	25.51
4	Guru Angad Nagar			15.49	15.49
5	Karkadooma		10.80	10.44	21.24
6	Preet Vihar			10.07	10.07
7	CBD-II			10.80	10.80
8	Shakarpur				0.00
9	Jhilmil			10.80	10.80
10	Dilshad Garden	20.16		16.35	36.51
11	Khichripur	21.79		15.89	37.68
12	Mother Dairy				0.00
13	Scope Building				0.00
14	Vivek Vihar				0.00
15	Akhardham			14.60	14.60
		121.93	40.83	146.31	309.07
15	Najafgarh S/stn	60.00		5.04	65.04
1	A4 Paschim Vihar			10.80	10.80
2	Nangloi	21.73		15.84	37.57
3	Nangloi W/W	20.89		10.85	31.74
4	Pankha Road			15.88	15.88
5	Jaffarpur			15.43	15.43
7	Inst. Area Janakpuri (Sagarpur)			17.60	17.60
8	Paschimpuri		10.05	15.47	25.52
9	Paschim Vihar	41.83		15.43	57.26
10	Mukherjee Park			20.83	20.83
11	Udyog Nagar			10.43	10.43
12	Choukhandi			10.07	10.07
13	DJB Najafgarh			21.60	21.60
		144.45	10.05	185.27	339.77

Sl. No	SUB-STATION	INSTALLED CAPACITY			
		66KV	33kV	11kV	TOTAL
16	Pappankalan-I S/stn	20.00		5.04	25.04
1	Bindapur Grid G-3 PPK	21.73		15.85	37.58
2	Bodella-I	20.10		16.24	36.34
3	Bodella-II	21.73		17.64	39.37
4	DC Janakpuri			10.03	10.03
5	G-2 PPK (Nasirpur)			10.80	10.80
6	G-5 PPK (Matiala)			15.51	15.51
7	G-6 PPK			5.40	5.40
8	G-15 PPK			10.80	10.80
9	Harinagar	21.18		16.25	37.43
10	Rewari line			5.44	5.44
		104.74	0.00	129.00	233.74
17	BBMB Rohtak Road				
1	S.B. Mill			10.07	10.07
2	Rama Road			10.88	10.88
3	Ram Pura			10.48	10.48
4	Rohtak Road			10.08	10.08
5	Vishal			10.40	10.40
6	Madipur			10.43	10.43
7	Sudershan Park			10.08	10.08
8	Kirti Nagar			5.44	5.44
		0.00	0.00	77.86	77.86
18	Shalimarbagh S/stn		40.00	6.00	46.00
1	S.G.T. Nagar			5.44	5.44
2	Ashok Vihar			0.00	0.00
3	Haiderpur			11.39	11.39
4	SMB FC			12.64	12.64
5	Rani Bagh			5.44	5.44
6	SMB KHOSLA			5.44	5.44
		0.00	40.00	46.35	86.35
19	Subzimandi S/stn			6.00	6.00
1	Shakti Nagar			5.04	5.04
2	Gulabibagh			10.88	10.88
3	Shahzadabagh			15.79	15.79
4	DU			5.44	5.44
5	Tripolia			10.88	10.88
6	B. G. Road			5.40	5.40
		0.00	0.00	59.43	59.43
20	Narela S/stn	40.00		5.04	45.04
1	A-7 Narela			10.88	10.88
2	Azad Pur			5.44	5.44
3	Badli	20.00		5.95	25.95
4	DSIDC Narela-1			5.95	5.95
5	GTK			5.94	5.94
6	Jahangirpuri	20.00	10.00	0.00	30.00
7	Bhalswa			12.64	12.64
8	Pitampura-I	20.00		5.04	25.04
9	RG-1			5.44	5.44
		100.00	10.00	62.32	172.32

Sl. No	SUB-STATION	INSTALLED CAPACITY			
		66KV	33kV	11kV	TOTAL
21	Gopalpur S/stn		30.00	5.04	35.04
1	Hudson Lane			5.95	5.95
2	Wazirabad			7.20	7.20
3	Indra Vihar			5.95	5.95
4	DIFR			5.44	5.44
5	GTK Road			5.44	5.44
6	Jahangirpuri		10.00	5.95	15.95
7	Civil lines			7.20	7.20
8	Pitam Pura-3			5.44	5.44
9	SGT Nagar			5.95	5.95
10	Tiggipur			10.88	10.88
11	Model Town			14.40	14.40
12	Azad Pur			5.44	5.44
		0.00	40.00	90.28	130.28
22	Rohini S/stn	40.00		6.00	46.00
1	Rohini Sec-22			18.08	18.08
2	Rohini Sec-24			5.44	5.44
3	Rohini-3			5.95	5.95
4	Rohini-4			11.39	11.39
5	Rohini-5			11.39	11.39
6	Rohini-6			0.00	0.00
7	Mangolpuri-2	20.00		7.20	27.20
8	Pitam Pura-1			5.44	5.44
9	Pitam Pura-2			10.48	10.48
10	Rohini DC-1			14.40	14.40
11	AIR Kham pur			11.90	11.90
		60.00	0.00	107.67	167.67
23	Kanjhawala S/stn	20.00		5.04	25.04
1	Bawana Clear Water			14.30	14.30
2	Pooth Khoord	20.00		5.44	25.44
4	Rohini -2			13.15	13.15
		40.00	0.00	37.93	77.93
24	BAWANA S/stn				
1	Bawana S/stn No. 6			10.88	10.88
2	Bawana S/stn No. 7			7.20	7.20
		0.00	0.00	18.08	18.08
25	Kashmeregata S/stn			5.04	5.04
1	Civil lines			7.20	7.20
2	Town Hall			8.64	8.64
3	Fountain			5.45	5.45
		0.00	0.00	26.33	26.33
26	Pappankalan-II				
1	DMRC				0.00
2	HASTAL			21.60	21.60
3	GGSH			10.80	10.80
		0.00	0.00	32.40	32.40
27	Trauma Center (AIIMS)				
1	AIIMS		13.26	5.04	18.30
2	Trauma Center			10.08	10.08
3	Netaji Nagar			15.12	15.12
4	Sanjay Camp			10.08	10.08
5	Kidwai Nagar			10.08	10.08
6	SJ Airport			5.04	5.04
7	Race Course			10.44	10.44
		0.00	13.26	65.88	79.14

Sl. No	SUB-STATION	INSTALLED CAPACITY			
		66KV	33kV	11kV	TOTAL
28	MUNDKA				
1	Mangolpuri-I			20.35	20.35
2	Rohini Sec-23	20.00		12.64	32.64
3	66kV Mundka			21.60	21.60
		20.00	0.00	54.59	74.59
29	DSIDC BAWANA				
1	DSIDC NRL-1	20.00			20.00
2	DSIDC NRL-2			16.32	16.32
3	Bawana Clear Water			7.30	7.30
4	Bawana-1			14.40	14.40
		20.00	0.00	38.02	58.02
30	RIDGE VALLEY				
1	Keventry Diary			10.08	10.08
2	Nehru Park			5.04	5.04
3	State Guest House			5.40	5.40
4	Bapu Dham			15.48	15.48
		0.00	0.00	36.00	36.00
31	IP EXTN (PRAGATI)				
1	Vidyut Bhawan			10.08	10.08
2	Dalhousie Road			5.04	5.04
3	National Archives			10.08	10.08
4	School Lane			10.44	10.44
		0.00	0.00	35.64	35.64
32	Wazirpur				
1	Tri Nagar			10.88	10.88
2	Wazirpur-1			17.18	17.18
3	Wazirpur-2			13.20	13.20
4	Ashok vihar			17.80	17.80
5	Azad Pur			5.44	5.44
6	GTK			4.80	4.80
		0.00	0.00	69.30	69.30
33	Peeragarhi				
1	Rani Bagh			5.44	5.44
2	Rani Bagh cc			9.60	9.60
		0.00	0.00	15.04	15.04
34	Rohini-II				
1	Rohini-6			13.15	13.15
		0.00	0.00	13.15	13.15

Utility	HT	LT	Total
BYPL	901.18	102.00	1003.18
BRPL	1264.49	242.00	1506.49
TPDDL	820.34	119.00	939.34
NDMC	253.74	24.00	277.74
DTL	753.52	0.00	753.52
IPGCL (RPH)	20.00	0.00	20.00
MES	20.10	0.00	20.10
TOTAL	4033.37	487.00	4520.37

20 DETAILS OF BREAK-DOWNS DURING THE MONTH OF JULY 2016

SL NO	OCCURRENCE OF BREAK-DOWN		DETAILS OF THE BREAKDOWN	TIME OF RESTORATION		REMARKS
	DATE	TIME		DATE	TIME	
1	22.5.16	20:30	400kV Bamnauli-Jhatikara Ckt-I	Contd.		AT BAMNAULI : AB PHASE, Z-I, Z-5, DT SENT, LBB, DIST 438.4METERS.
2	1.7.16	02:15	220kV MEHRAULI - BTPS CKT. - I	1.7.16	07:50	AT MEHRAULI CKT. TRIPPED ON DIST PROT, ZONE-I, ACTIVE GROUP 1, DIST 13.82KM AT BTPS ZONE -I, B PHSAE, E/F, DIST 7.6KM.
3	1.7.16	10:35	220 KV GOPALPUR-WAZIRABAD CKT - 1	1.7.16	17:49	AT WAZIRABAD CKT. TRIPPED ON R PHASE, ZONE-II, DIST 4.159KM AT GOPALPUR NO TRIPPING.
4	3.7.16	07:00	220kV BAWANA-DSIIDC BAWANA CKT-I	3.7.16	11:03	AT DSDIC CKT. TRIPPED ON DIST PROT, 86B, AUTO RECLOSE, RYB PHASE TRIP. AT BAWANA CKT. TRIPPED ON 86B, AUTO RECLOSE, RYB PHASE TRIP.
5	4.7.16	12:27	220kV GOPALPUR- MANDOLACKT-II	4.7.16	13:12	AT GOPALPUR CKT. TRIPPED ON M2B, M2T, M2R, ZONE-I, DIST 1.9KM. AT MANDOLA CKT. TRIPPED ON ZONE-I, DIST 19.32KM, B PHASE.
6	4.7.16	00:56	OKHLA 220/33kV 100MVA Tx-III	4.7.16	09:30	TR. TRIPPED WITHOUT INDICAITON.
7	4.7.16	02:00	PATPARGANJ 220/66kV 100MVA Tx-I	4.7.16	06:30	TRIPPED ON 86, OLTC, BUCHHOLZ.
8	4.7.16	06:40	PATPARGANJ 220/66kV 100MVA Tx-I	4.7.16	10:50	TRIPPED ON OLTC, BUCHHOLZ , 86.
9	4.7.16	17:24	220kV GOPALPUR- MANDOLACKT-I	4.7.16	17:52	AT GOPALPUR SUPPLY FAIL. AT MANDOLA CKT. TRIPPED ON DIST PROT, DIST 16KM.
10	5.7.16	10:55	OKHLA 220/33kV 100MVA Tx-IV	1.8.16	18:40	TR. TRIPPED ON 30A, BUCHOLZ, CTR, DIFFERENTIAL RELAY, 86, 164, INTERNAL FLASH IN WINDING AND BUSHING GOT DAMAGED.
11	5.7.16	12:52	220kV MEHRAULI - BTPS CKT. - I	5.7.16	13:14	AT BTPS CKT. TRIPPED ON DIST PROT, ZONE-I, DIST. 15.3KM, B PHASE, E/F. AT MEHRAULI CKT. TRIPPED ON DIST PROT, DIST. 11KM, ZONE-I, ACTIVE GROUP-1, 186, 186.
12	5.7.16	18:11	MEHRAULI 220/66kV 100MVA Tx-III	5.7.16	18:34	TR. TRIPPED WITHOUT INDICATION.
13	5.7.16	18:11	MEHRAULI 220/66kV 100MVA Tx-I	5.7.16	18:19	100MVA TR. -III TRIPPED ALONGWITH I/C-1 TRIPPED ON O/C.
14	8.7.16	12:30	SARITA VIHAR 220/66kV 100MVA Tx-I	8.7.16	13:25	TR. TRIPPED DUE TO OPERATION OF BUS BAR PROTECTION.
15	8.7.16	12:30	SARITA VIHAR 220/66kV 100MVA Tx-III	8.7.16	18:35	TR. TRIPPED AS BUS COUPLER TRIPPED ON BUS BAR PROTECTION.
16	8.7.16	12:30	220kV PRAGATI - SARITA VIHAR CKT - I	8.7.16	18:45	AT SARITA VIHAR CKT. TRIPPED ON POLE DISCREPANCY. AT PRAGATI CKT. DID NOT TRIP.
17	10.7.16	02:10	220kV MUNDKA-NAJAFGARH CKT	10.7.16	06:57	AT MUNDKA CKT. TRIPPED ON DIST PROT, ZONE-II, 86. AT NAJAFGARH CKT. DID NOT TRIP.
18	10.7.16	12:04	220kV MUNDKA-KANJHAWALA CKT	10.7.16	20:41	AT MUNDKA CKT. TRIPPED ON DIST PROT, ZONE-I, R PHASE AT KHANJAWALA CKT. DID NOT TRIP.
19	11.7.16	00:40	220kV PRAGATI - SARITA VIHAR CKT - I	11.7.16	13:25	AT SARITA VIHAR CKT. TRIPPED ON BUS BAR PROT., 96, AUTO RECLOSE, 186A&B. AT PRAGATI CKT. DID NOT TRIP.
20	11.7.16	00:40	220kV SARITA VIHAR - BTPS CKT.-I	11.7.16	01:31	AT SARITA VIHAR CKT. TRIPPED ON 96 A&B. AT BTPS CKT. DID NOT TRIP.
21	11.7.16	00:40	SARITA VIHAR 220/66kV 100MVA Tx-I	11.7.16	01:31	TR. TRIPPED DUE TO OPERATION OF BUS BAR PROTECTION.

SL NO	OCCURRENCE OF BREAK-DOWN		DETAILS OF THE BREAKDOWN	TIME OF RESTORATION		REMARKS
	DATE	TIME		DATE	TIME	
22	11.7.16	01:31	400kV Ballabgarh-Bamnauli Ckt-I	11.7.16	01:53	AT BAMNAULI CKT. TRIPPED ON 186 A&B. AT BALLABGARH CKT. DID NOT TRIP.
23	11.7.16	08:05	220kV PRAGATI - SARITA VIHAR CKT-II	11.7.16	08:10	AT SARITA VIHAR CKT. TRIPPED DUE TO OPERATION OF BUS BAR PROT. AT PRAGATI CKT. DID NOT TRIP.
24	11.7.16	08:05	220kV SARITA VIHAR - BTPS CKT.-I	11.7.16	08:08	AT SARITA VIHAR CKT. TRIPPED DUE TO OPERATION OF BUS BAR PROT. AT BTPS CKT. DID NOT TRIP.
25	11.7.16	08:05	220kV SARITA VIHAR - BTPS CKT.-II	11.7.16	08:08	AT SARITA VIHAR CKT. TRIPPED DUE TO OPERATION OF BUS BAR PROT. AT BTPS CKT. DID NOT TRIP.
26	11.7.16	08:05	PARKSTREET 220/33kV 100MVA Tx-II	11.7.16	08:17	TR. TRIPPED ON OVER FLUX, 186.
27	11.7.16	08:05	SARITA VIHAR 220/66kV 100MVA Tx-II	11.7.16	08:08	TR. TRIPPED DUE TO OPERATION OF BUS BAR PROT.
28	11.7.16	08:05	SARITA VIHAR 220/66kV 100MVA Tx-I	11.7.16	08:08	TR. TRIPPED DUE TO OPERATION OF BUS BAR PROT.
29	11.7.16	08:42	SARITA VIHAR 220/66kV 100MVA Tx-II	11.7.16	09:17	TR. TRIPPED DUE TO OPERATION OF BUS BAR PROT.
30	11.7.16	08:42	SARITA VIHAR 220/66kV 100MVA Tx-I	11.7.16	09:09	TR. TRIPPED DUE TO OPERATION OF BUS BAR PROT.
31	11.7.16	08:42	220kV SARITA VIHAR - BTPS CKT.-I	11.7.16	09:09	AT SARITA VIHAR CKT. TRIPPED DUE TO OPERATOIN OF BUS BAR PROT. AT BTPS CKT. DID NOT TRIP.
32	11.7.16	08:42	220kV PRAGATI - SARITA VIHAR CKT-II	11.7.16	14:16	AT SARITA VIHAR CKT. TRIPPED DUE TO BUS BAR PROT. OPERATED. AT PRAGATI CKT. DID NOT TRIP.
33	11.7.16	18:05	RIDGE VALLEY 220/66kV 160MVA Tx-I	11.7.16	14:50	TR. TRIPPED ON DIFFERENTIAL , Y PHASE LA DAMAGE, 66KV I/C-I TRIPPED ON REF.
34	12.7.16	03:35	NARAINA 220/33kV 100MVA Tx-II	12.7.16	10:45	TR. TRIPPED ON 86.
35	12.7.16	06:12	220kV MUNDKA-NAJAFGARH CKT	12.7.16	06:41	AT MUNDKA CKT. TRIPPED ON DIST PROT. ZONE-I, RYB PHASE, 86 AT NAJAFGARH CKT. DID NOT TRIP.
36	12.7.16	07:49	NARAINA 220/33kV 100MVA Tx-I	12.7.16	08:12	I/C TRIPPED ON 86, O/C, R PHASE, E/F, B PHASE.
37	12.7.16	07:49	NARAINA 220/33kV 100MVA Tx-III	12.7.16	08:12	I/C TRIPPED ON 86, O/C, E/F.
38	12.7.16	16:32	DSIIDC Bawana 220/66kV 100MVA Tx-II	12.7.16	20:22	TR. TRIPPED ON O/C, E/F, BUCHOLZ, DIFFERENTIAL PROT, 30ABC.
39	12.7.16	22:32	220kV GOPALPUR-SUBZI MANDI CKT-I	13.7.16	14:41	AT GOPALPUR CKT. TRIPPED ON E/F. AT SUBZI MANDI CKT. DID NOT TRIP.
40	13.7.16	00:26	PATPARGANJ 220/33kV 100MVA Tx-IV	13.7.16	01:39	TR. TRIPPED ON ATDDL-I & II.
41	14.7.16	11:58	220kV KANJHAWALA-NAJAFGARH CKT-2	14.7.16	12:25	AT KHANJAWALA CKT. TRIPPED ON B PHASE, 86. AT NAJAFGARH CKT. TRIPPED ON ZONE 2,3 &4, ABC PHASE.
42	14.7.16	14:10	VASANT KUNJ 66/11kV, 20MVA Tx-I	14.7.16	14:25	TX TRIPPED ON 51B&C PHASE.
43	14.7.16	18:51	220kV BAMNAULI-PAPPANKALAN-II CKT-II	14.7.16	19:18	AT BAMNAULI CKT TRIPPED ON D/P,Z-1,C-PH,DIST-3.96KMS. AT PPK-2 CKT TRIPPED ON D/P,Z-1,AB&C-PH,DIST-7.4KMS.

SL NO	OCCURRENCE OF BREAK-DOWN		DETAILS OF THE BREAKDOWN	TIME OF RESTORATION		REMARKS
	DATE	TIME		DATE	TIME	
44	16.7.16	03:02	220kV OKHLA - BTPS CKT. - II	16.7.16	09:37	AT BTPS CKT. TRIPPED WITHOUT INDICATION. AT OKHLA CKT. DID NOT TRIP. AT OKHLA CKT. TRIED HELD OK. AT BTPS CKT. DID NOT CHARGE DUE TO BREAKER PROBLEM AT BTPS END SHUTDOWN GIVEN AT OKHLA END TO REPLACE DAMAGED JUMPER AT TOWER NO. 15 ON CKT.
45	16.7.16	07:33	400kV Bawana-Mundka Ckt-I	16.7.16	12:16	AT MUNDKA CKT. TRIPPED DUE TO OPERAITON OF BUS BAR PROTECTION. AT 400KV BUS-I. CKT. TRIED BUT DID NOT HOLD AND TRIPPED ON SOTF. AT BAWANA CKT. DID NOT TRIP.
46	16.7.16	11:30	PATPARGANJ 33/11kV, 20MVA Tx	16.7.16	11:40	TR. TRIPPED WITHOUT INDICATION.
47	16.7.16	14:25	INDRAPRASTHA POWER 220/33kV 100MVA Tx-III	16.7.16	18:10	33KV I/C-III OF TR. TRIPPED. SNAKE ELECTROCUTED IN THE YARD.
48	16.7.16	14:25	INDRAPRASTHA POWER 220/33kV 100MVA Tx-I	16.7.16	15:10	33KV I/C-I OF TR. TRIPPED ON O/C, E/F. SNAKE ELECTROCUTED IN THE YARD.
49	16.7.16	14:25	INDRAPRASTHA POWER 220/33kV 100MVA Tx-II	16.7.16	15:10	33KV I/C-II TRIPPED ON WITHOUT INDICATION. SNAKE ELECTROCUTED IN THE YARD.
50	17.7.16	11:45	220kV PRAGATI - PARK STREET CKT-II	17.7.16	12:10	AT PARK STREET CKT. TRIPPED ON 86A. AT PRAGATI CKT. DID NOT TRIP.
51	18.7.16	08:45	SARITA VIHAR 220/66kV 100MVA Tx-III	18.7.16	11:05	TR. TRIPPED PRV, WTI, OTI.
52	18.7.16	15:28	OKHLA 220/33kV 100MVA Tx-III	18.7.16	15:37	33KV I/C -III TRIPPED ON 86, 51C.
53	18.7.16	18:25	400kV Bamnauli-Jhatikara Ckt-II	19.7.16	13:40	AT BAMNAULI CKT. TRIPPED ON DIST PROT, ZONE-II, III , DIST 6.6KM AT JHATIKRA CKT. DID NOT TRIP.
54	19.7.16	11:25	SARITA VIHAR 220/66kV 100MVA Tx-III	19.7.16	12:45	TR. TRIPPED ON 130, E/F. 66KV I/C TRIP ON INTER TRIP, 86.
55	19.7.16	17:57	ROHINI 66/11kV, 20MVA Tx-I	19.7.16	20:41	TR. TRIPPED ON 51X, 51C, FLASH IN 11KV BUS SECTION.
56	20.7.16	14:30	INDRAPRASTHA POWER 220/33kV 100MVA Tx-III	20.7.16	19:05	TR. TRIPPED ON 51A, 86, 186, B PHASE JUMPER SNAPPED.
57	20.7.16	15:40	220kV BAWANA-DSIIDC BAWANA CKT-II	20.7.16	16:36	AT DSIDC BAWANA CKT. TRIPPED DUE TO FAILURE OF VT FUSE. AT BAWANA CKT. TRIPPED ON 86B.
58	20.7.16	15:40	220kV BAWANA-DSIIDC BAWANA CKT-I	20.7.16	16:36	AT DSIDC BAWANA CKT TRIPPED DUE TO FAILURE OF VT FUSE. AT BAWANA CKT. TRIPPED ON 186A&B.
59	20.7.16	15:40	220kV DSIIIDC BAWANA-NARELA CKT-II	20.7.16	18:01	AT DSIDC CKT. TRIPPED ON ZONE-I, DIST PROT, C PHASE, DIST 8.019KM AT NARELA CKT. DID NOT TRIP.
60	21.7.16	16:43	220kV PRAGATI - PARK STREET CKT-II	21.7.16	16:52	AT PARK STREET CKT. TRIPPED ON 86A. AT PRAGATI CKT. DID NOT TRIP.
61	21.7.16	16:55	220kV PRAGATI - PARK STREET CKT-II	21.7.16	17:00	AT PARK STREET CKT. TRIPPED ON 86A. AT PRAGATI CKT. DID NOT TRIP.
62	21.7.16	19:10	220kV PRAGATI - PARK STREET CKT-II	21.7.16	19:15	AT PARK STREET CKT. TRIPPED ON 86A. AT PRAGATI CKT. DID NOT TRIP.
63	22.7.16	03:40	NARAINA 220/33kV 100MVA Tx-II	22.7.16	08:00	TR. TRIPPED DUE TO LOW GAS PRESSURE.
64	22.7.16	10:18	NARAINA 220/33kV 100MVA Tx-II	22.7.16	19:25	33KV I/C-II TRIPPED ON LOW GAS PRESSURE, B PHASE POLE OF CB DAMAGE.
65	22.7.16	15:00	NARAINA 220/33kV 100MVA Tx-III	22.7.16	16:00	33KV I/C-III TRIPPED ON E/F, O/C.

SL NO	OCCURRENCE OF BREAK-DOWN		DETAILS OF THE BREAKDOWN	TIME OF RESTORATION		REMARKS
	DATE	TIME		DATE	TIME	
66	22.7.16	15:00	NARAINA 220/33kV 100MVA Tx-I	22.7.16	15:05	33kV I/C-I TRIPPED ON E/F, O/C R&B PHASE.
67	22.7.16	15:22	WAZIRABAD 220/66kV 160MVA Tx-I	22.7.16	20:39	TR. TRIPPED ON BUCHHOLZ, WTI, DIFFERENTIAL PRV.
68	22.7.16	18:19	220kV WAZIRABAD-GEETA COLONY CKT-I	22.7.16	18:51	AT WAZIRABAD CKT. TRIPPED ON ZONE-I, DIST PROT. AT GEETA COLONY CKT. TRIPPED ON BC PHASE, TRIP PHASE ABC, O/C. DIST PROT, ZONE -I, DIST 3.726KM.
69	22.7.16	18:52	220kV BAMNAULI-NARAINA CKT-II	22.7.16	20:01	AT BAMNAULI CKT. TRIPPED ON DIST PROT, ZONE-1, DIST. 11.6KM. AT NARAINA. CT SUPPLY FAIL.
70	23.7.16	12:48	220kV KANJHAWALA-NAJAFGARH CKT	23.7.16	13:41	AT KHANJAWALA CKT. TRIPPED ON C PHASE , ZONE -II. AT NAJAFGARH CKT. TRIPPED ON ZON E-II. TRIP ABC, 186.
71	24.7.16	13:02	220kV GEETA COLONY- PATPARGANJ CKT-I	24.7.16	15:10	AT GEETA COLONY CKT. TRIPPED ON DIST PROT, ZONE-I, O/C, DIST 1.728KM, E/F. AT PATPARGANJ CKT. TRIPPED ON 186, 186, DIST PROT, ZONE-I.
72	24.7.16	14:27	400kV Ballabgarh-Bamnauli Ckt-I	24.7.16	17:34	AT BAMNAULI CKT. TRIPPED ON 186A&B., 130F.
73	24.7.16	15:46	OKHLA 33kV MASJID MOTH CKT	24.7.16	16:50	CKT. TRIPPED ON O/C, R&B PHASE, REPAIR OF FLASH IN CT.
74	26.7.16	06:02	220kV MEHRAULI - BTPS CKT. - II	26.7.16	06:41	AT MEHRAULI CKT. TRIP ON ABC PHASE, DIST PROT, ZONE-I, DIST 9.531KM. AT BTPS CKT. TRIPPED ON DIST PROT, ZONE-I, Y PHASE, E/F, DIST 9.2KM.
75	26.7.16	13:14	220kV MEHRAULI - BTPS CKT. - II	26.7.16	13:46	AT BTPS CKT. TRIPPED ON DIST PROT., ZONE-I, DIST 14.5KM. AT MEHRAULI CKT. TRIPPED ON DIST PROT, ZONE-I, DIST 6.89KM.
76	26.7.16	14:59	PATPARGANJ 33/11kV, 16MVA Tx	26.7.16	16:42	TR. TRIPPED WITHOUT INDICATION.
77	27.7.16	07:05	PAPPANKALAN-II 220/66kV 160MVA Tx-IV	27.7.16	07:28	66kV I/C-IV TRIPPED ON O/C, E/F, 50/51G, MASTER TRIP.
78	29.7.16	10:48	220kV BAMNAULI - DIAL CKT-I	29.7.16	14:35	AT BAMNAULI CKT. TRIPPED ON POLE DISCREPANCY.
79	29.7.16	16:23	KANJHAWALA 220/66kV 100MVA Tx-II	29.7.16	20:10	TR. TRIPPED ON LOW AIR PRESSURE.
80	29.7.16	21:34	KANJHAWALA 220/66kV 100MVA Tx-II	30.7.16	10:12	TR. TRIPPED ON LOW AIR PRESSURE.
81	30.7.16	03:54	VASANT KUNJ 220/66kV 100MVA Tx-II	30.7.16	04:24	TR. TRIPPED ON 86, 30F.
82	30.7.16	23:40	VASANT KUNJ 220/66kV 100MVA Tx-II	31.7.16	00:04	TR. TRIPPED ON 86.
83	31.7.16	13:16	220kV BAWANA-DSIIDC BAWANA CKT-I	31.7.16	18:32	AT DSIDC BAWANA CKT. TRIPPED ON DIST PROT, ZONE-I, DIST 3.994KM. AT CKT. TRIPPED ON BAWANA 86A, 86B.
84	31.7.16	18:22	220kV GOPALPUR-SUBZI MANDI CKT-I	31.7.16	19:34	AT GOPALPUR CKT. TRIPPED ON GEN TRIP, DIST PROT, ZONE-I, DIST 0.3KM. AT SUBZI MANDI CKT. DID NOT TRIP.

20 DETAILS OF UNDER FREQUENCY RELAY OPERATIONS IN DELHI POWER SYSTEM DURING THE MONTH OF JULY 2016

DATE	S. N.	TIME		Name of Grid	NAME OF AFFECTED FEEDERS	MODE	LOAD RELIEF IN MW
		OUT	IN				
				NIL			